



**ellen
wille**
THE HAIR YOU LOVE

www.ellen-wille.de



**ellen
wille**
THE HAIR YOU LOVE



**ELLEN'S
HEADWEAR**

THE HEADWEAR YOU LOVE

[DE] Zeitlose Designs, trendige Fashion-Statements. Ellen's Headwear bietet stilvolle Turbane, mit denen Sie Ihren persönlichen Look unterstreichen. Modische Farben, aufregende Muster. Die aktuelle Collection bietet hochwertige Headwear für alle Jahreszeiten. Entdecken Sie jetzt „the headwear you love“!

[EN] Timeless designs, trendy fashion statements. Ellen's Headwear offers you stylish turbans to complement your personal look with vibrant colours and exciting designs. The latest collection offers you high-quality headwear for all the seasons. Discover „the headwear you love“!

[FR] Un style intemporel, des looks tendance. Headwear vous habille avec élégance en accentuant votre style personnel. Couleurs et motifs attrayants, la nouvelle collection présente des couvre-chefs de qualité pour toutes saisons. Partez à la découverte „the headwear you love“ !





WEAR REVERSE

AMA

A cherry/red

A grey/taupe

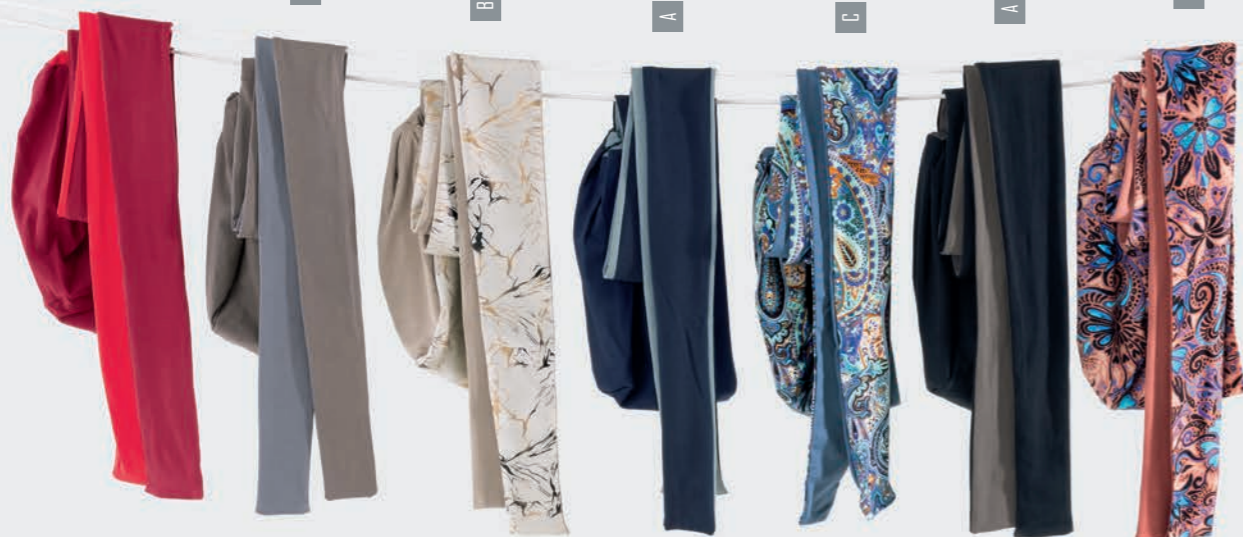
B alabaster/print

A marine/blue

C jeans/paisley

A black/taupe

C terracotta/print



A 95 % Cotton, 5 % Elastane

B 96 % Polyester, 4 % Elastane / 94 % Viscose (extracted from Bamboo), 6 % Elastane

C 94 % Viscose (extracted from Bamboo), 6 % Elastane

STYLING TIP: AMA in black/taupe + hairpiece MINT





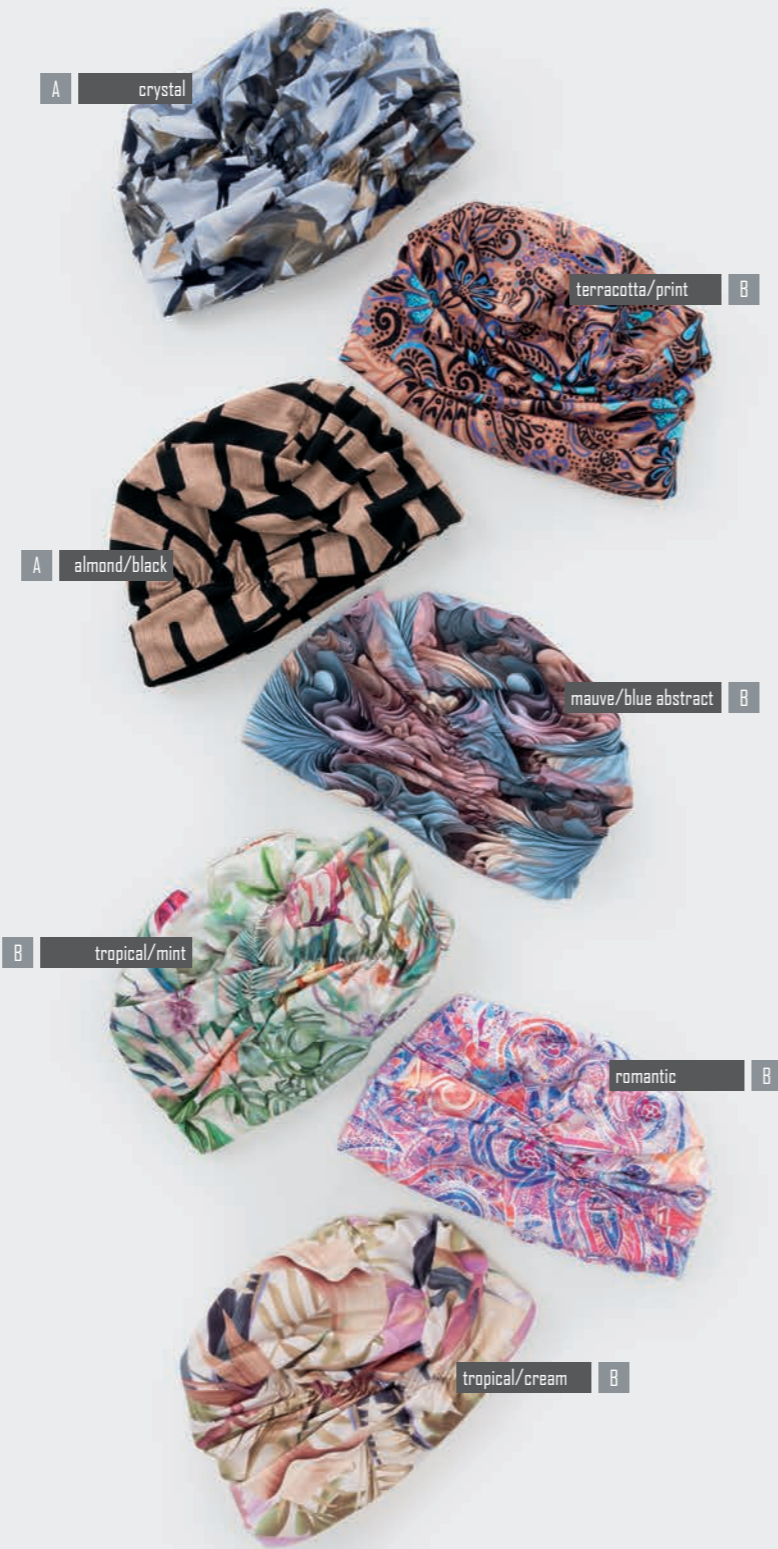
A Shell: 94 % Viscose, 6 % Elastane
 Lining: 94 % Viscose (extracted from Bamboo), 6 % Elastane
B Shell & Lining: 94 % Viscose (extracted from Bamboo), 6 % Elastane



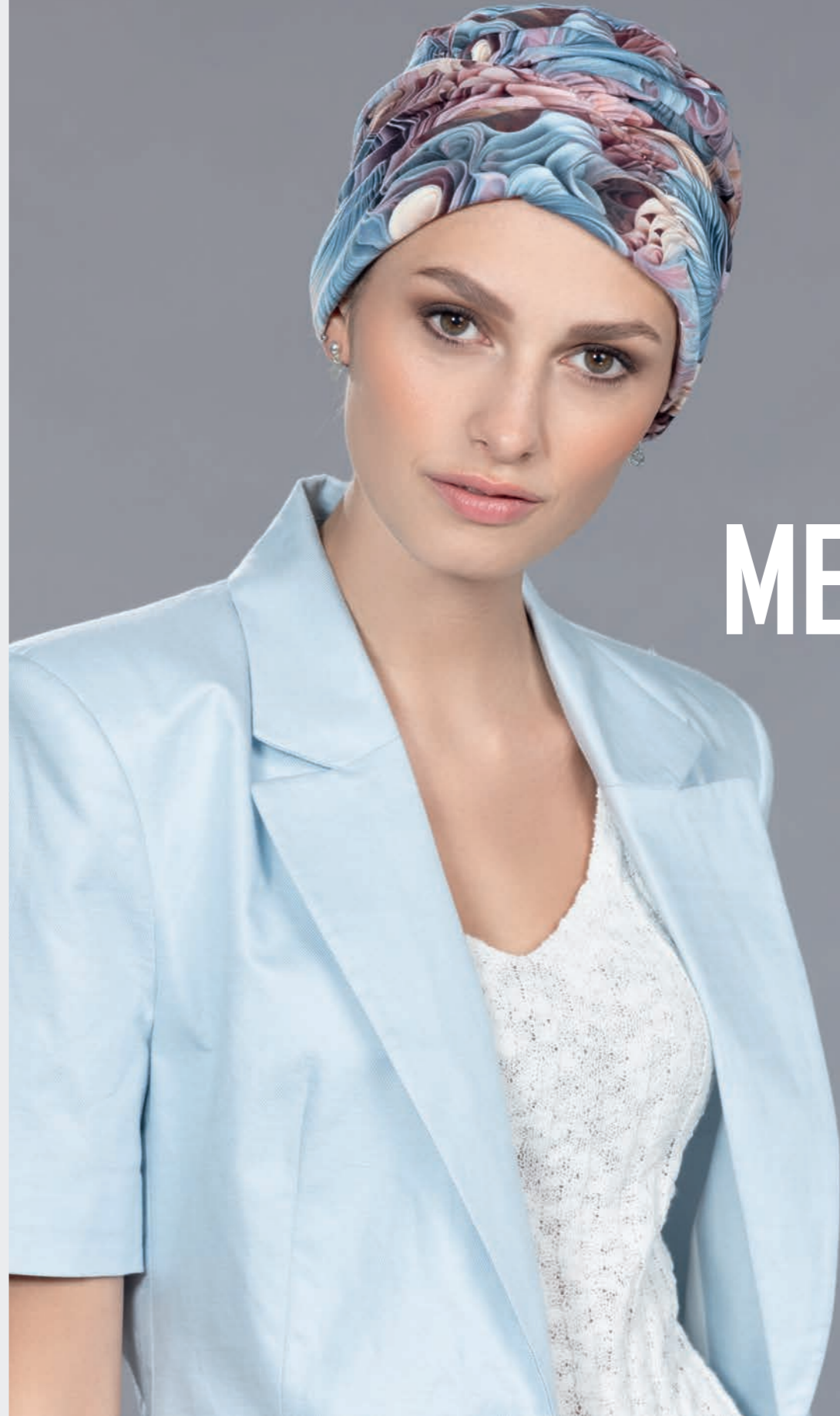
STYLING TIP: GOGA in beige/black + hairpiece CAYENNE

GOGA





A Shell: 94% Viscose, 6% Elastane
Lining: 94% Viscose (extracted from Bamboo), 6% Elastane
B Shell & Lining: 94% Viscose (extracted from Bamboo), 6% Elastane



MERAL



STYLING TIP: TALA in jeans + hairpiece SAGE



TALA

COLOURS TALA



- A 100% Cotton
- B 95% Cotton, 5% Elastane
- C 95% Viscose, 5% Elastane
- D 95% Polyester, 5% Elastane
- E 50% Cotton, 50% Polyester



TALA



95% Viscose (extracted from Bamboo),
5% Elastane

TALA SOFT



STYLING TIP: TALA in coral + hairpiece SAGE



95% Cotton, 5% Elastane

COMFORT CAP

COLOUR: wild cat

UNA

COLOUR: black



COLOUR: jeans



jeans

marine

plum

burgundy

black

olive

raspberry

Cap: 95 % Viscose (extracted from Bamboo), 5 % Elastane
Scarf: 100 % Polyester



95% Viscose (extracted from Bamboo),
5% Elastane



STYLING TIP: MAGENA in khaki + hairpiece CAYENNE



MAGENA



MISU



STYLING TIP: MISU in antique rose/leaves + hairpiece CAYENNE



- A Shell & Lining: 100% Cotton
- B Shell: 95% Cotton, 5% Elastane / Lining: 100% Cotton
- C Shell: 55% Viscose, 45% Cotton / Lining: 100% Cotton



95 % Viscose (extracted from Bamboo),
5 % Elastane

ANOKI



AMA FINA



STYLING TIP: AMA FINA in magenta/maze + hairpiece MINT



STYLING TIP: AMA FINA in black/maze + hairpiece SAGE

A 100% Cotton B 100% Viscose C 50% Cotton, 50% Viscose

A flowers blue



A cat/blue white



A nougat



C taupe/maze



C black/maze



C magenta/maze



B tiger



NAMIDA

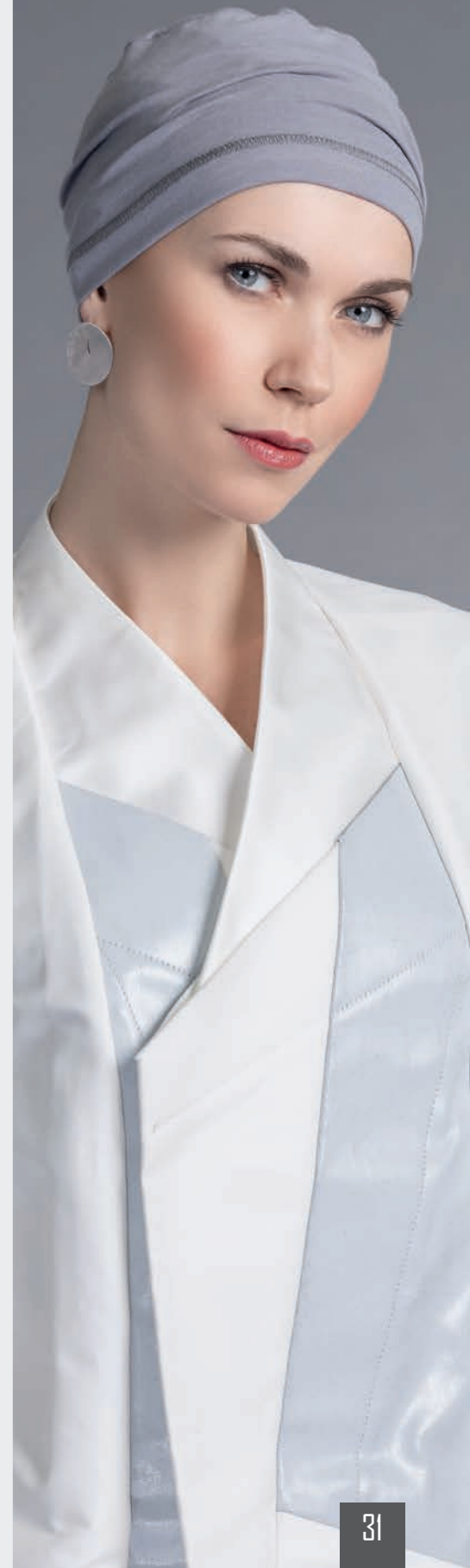


95% Viscose (extracted from Bamboo),
5% Elastane

EASY FIT



95% Cotton, 5% Elastane





KIONA



COLOUR: black white



WEAR REVERSE

beige/black B

black/anthrazit A

marine/jeans A

B petrol/pixel

grey B

A 95% Viscose (extracted from Bamboo), 5% Elastane

B 95% Cotton, 5% Elastane



COLOUR: black/anthrazit

GO



STYLING TIP: GO in marine/jeans + hairpiece CAYENNE

HAIRPIECE SAGE
15 - 23 CM



This hairpiece is available in a wide variety of natural hair colours. For the full range of colours, please visit: www.ellen-wille.de



STYLING TIP
hairpiece SAGE combined with turban TALA in jeans



SAGE
HAIRPIECE



HAIRPIECE VERBENA
15 - 23 CM



This hairpiece is available in a wide variety of natural hair colours. For the full range of colours, please visit: www.ellen-wille.de



STYLING TIP
hairpiece VERBENA combined with turban MAGENA in burgundy



VERBENA
HAIRPIECE

HAIRPIECE CAYENNE
30 - 36 CM



This hairpiece is available in a wide variety of natural hair colours. For the full range of colours, please visit: www.ellen-wille.de



CAYENNE
HAIRPIECE

STYLING TIP

hairpiece CAYENNE combined with turban MAGENA in khaki



MINT
HAIRPIECE



HAIRPIECE MINT
8 - 12 CM



This hairpiece is available in a wide variety of natural hair colours. For the full range of colours, please visit: www.ellen-wille.de



STYLING TIP

hairpiece MINT combined with turban MERAL in mauve/blue abstract

A woman with a red turban and a red dress is holding a red curtain. The background is a dark grey gradient. The text is in white, bold, sans-serif font.

THE STYLE YOU LOVE

LATEST TRENDS. PREMIUM QUALITY.

OVERVIEW

turbans



Ama 4-5



Ama Fina 26-27



Anoki 24-25



Comfort Cap 16-17



Easy Fit 30-31



Go 34-35



Goga 6-7



Kiona 32-33



Magena 20-21



Meral 8-9



Misu 22-23



Namida 28-29

turbans



Tala 10-13



Tala Soft 14-15



Una 18-19

hairpieces



Cayenne 38



Mint 39



Sage 36



Verbena 37

ELLEN'S HEADWEAR