


HAIRPOWER

www.ellen-wille.de



Power Up Your Style

HAIRPOWER

Ellen's
POWER
BOOK




ellen
wille
THE HAIR YOU LOVE

Power Up Your Style

ELLEN'S POWER BOOK –
THE FULL STORY OF **HAIRPOWER** STYLES
BY ELLEN WILLE

 HAIRPOWER





CHER FUTURA » Page 144



Hairstyle Creates Power!

Willkommen bei HAIRPOWER. Mit diesem Power Book halten Sie eine komplette Übersicht über unsere größte Collection in den Händen. HAIRPOWER ist so vielseitig wie die Menschen, für die wir Frisuren designen. Wir haben nicht nur unsere gesamte Energie, unser Fachwissen, sondern auch unendlich viel Liebe in diese Collection gesteckt. Sie finden hier Schnitte für jeden Anlass, Stil, Typ und Geschmack. Eines haben alle Looks gemein: In jedes einzelne Modell ist unsere ganze Leidenschaft für Qualität und Hairdesign eingeflossen. Lassen Sie sich inspirieren! Schlagen Sie mit uns ein weiteres Kapitel auf! Power up your style!

Welcome to HAIRPOWER. With this Power Book, you are having a complete overview of our largest collection at your hands. HAIRPOWER is so multifaceted like the people we design the hairstyles for. Not only did we put our complete energy and expertise into this collection but also an infinite amount of love. You will find cuts for every occasion, style, character and taste. All looks have one thing in common: We have incorporated our whole passion for quality and hairdesign into each and every model. Get inspired! Open up another chapter with us! Power up your style!

Bienvenue chez HAIRPOWER. Avec ce magnifique Power Book, vous avez entre les mains une vue d'ensemble de notre plus grande collection. HAIRPOWER est aussi diversifiée que les personnes pour lesquelles nous créons toutes ces coiffures. Nous avons mis non seulement toute notre énergie mais aussi toutes nos compétences ainsi que beaucoup d'amour dans cette collection. Vous y trouverez un modèle pour chaque occasion, style, type ou goût. Toutes ces créations ont une chose en commun : notre passion pour la qualité et le design capillaire. Laissez-vous inspirer ! Tournons ensemble les pages de ce nouveau chapitre ! Dynamisez votre style !

Benvenuti da HAIRPOWER. Con questo Power Book ha tra le sue mani una visione completa della nostra più grande collezione. HAIRPOWER è tanto varia, così come le persone per cui ideiamo i nostri design. Abbiamo dedicato a questa collezione non solo tutta la nostra energia e la nostra competenza, bensì anche infinito entusiasmo. In questa linea trova tagli per ogni occasione, stile e gusto. Tutti i look hanno una cosa in comune: ogni modello è frutto della nostra passione per la qualità e il design. Si lasci ispirare! Apra con noi un nuovo capitolo! Power up your style!

Bienvenido a HAIRPOWER. Con este Power Book, tiene usted una visión completa de nuestra colección principal en sus manos. HAIRPOWER es tan versátil como las personas para las que diseñamos los peinados. En esta colección no solo hemos puesto toda nuestra energía y experiencia sino también nuestro cariño infinito. Aquí encontrará cortes para cada ocasión, estilos, tipos y gustos. Todos los modelos tienen algo en común: a cada uno se le ha transmitido nuestra pasión por la calidad y el diseño del cabello. ¡Déjese inspirar! ¡Abra otro capítulo con nosotros! Power up your style!

Знакомьтесь – новая HAIRPOWER! У вас в руках самый полный обзор нашей самой большой коллекции. HAIRPOWER так же универсальна, как и люди, для которых мы разрабатываем причёски. Мы вложили в эту коллекцию не только всю свою энергию, опыт, но и бесконечную любовь. Здесь вы найдёте стрижки на все случаи жизни, на любой вкус, стиль и тип. Все они имеют одну общую черту: в каждой модели заключена наша страсть к качеству и дизайну волос. Поддайтесь вдохновению! Откройте с нами еще одну главу! Зарядите свой стиль!

Yours

Ellen Worne

BLUES **
 SWING **
 JAZZ **D

ENJOY THE
 SOUNDS
 OF BEAUTY



Blues

BLUES COLOURS:

cosmoblack mix, hotespreso mix, chocolate mix, hotmocca mix,
 lightbernstein rooted, lighthoney rooted, sandyblonde rooted,
lightchampagne rooted, darkcherry mix, hotcinnamon mix,
 mangored rooted, silverblonde rooted



Swing

SWING COLOURS:

cosmoblack mix, darkespreso mix,
 chocolate mix, hotmocca mix, bernstein rooted,
 lighthoney rooted, lightchampagne rooted, flame mix,
 cinnamon mix, mangored rooted,
silverblonde rooted



Jazz

JAZZ COLOURS:

espresso mix, chocolate rooted, hotmocca mix, bernstein rooted,
 sandmulti rooted, lightcaramel mix, lightchampagne rooted,
hotflame mix, mangored rooted, cognac rooted,
 salt/pepper mix, pearlblonde rooted, silverblonde rooted



FENJA ★★★
FENJA SMALL ★★★



FENJA SMALL COLOURS:
darkchocolate mix, chocolate mix,
mocca mix, sand mix, caramel mix,
champagne rooted, auburn mix



FENJA COLOURS:
blackcherry mix, espresso mix, chocolate mix,
mocca rooted, tobacco rooted, sand rooted,
sandmulti rooted, champagne rooted, auburn mix

KISS ★★★D



KISS COLOURS:
espresso rooted, chocolate rooted, hothazelnut rooted,
mocca lighted, bernstein rooted, sandyblonde rooted,
pastelblonde mix, hotflame mix, mango mix,
salt/pepper rooted, pearlblonde rooted



DISC ★★★



DISC COLOURS:

black, chocolate mix, coffeebrown lighted, hazelnut mix,
tobacco mix, bernstein rooted, darksand rooted,
lightcaramel mix, lighthoney mix, champagne rooted,
platin mix, aubergine mix, auburn rooted, flame mix,
lightmango mix, pepper lighted





The Power of Vision

Eine inspirierende Vision ist die Basis von Innovation. Sie ist in die Zukunft gerichtet und wird deutlicher, je engagierter wir an ihrer Verwirklichung arbeiten. Jedes große Ziel beginnt mit einer vagen Vorstellung. Entscheidend ist der Ehrgeiz, um Träume und Ideen zu realisieren. Lassen Sie sich inspirieren von der Kraft der Visionen!

An inspiring vision is the base of innovation. It is trend-setting and forward-looking and gets evermore close with the commitment and effort we put into its realization. Every big aspiration starts with a vague idea. Our will, dreams and ideas are crucial to make them come true. Be inspired by the power of vision!

Une inspiration visionnaire est le point de départ d'une innovation. Elle est orientée vers l'avenir et devient de plus en plus évidente au fur et à mesure que l'on travaille à sa mise au point. Tous les grands projets débutent par une esquisse floue. Le plus important est de laisser la place à l'ambition, le rêve et les idées. Laissez-vous inspirer par la force des visions !

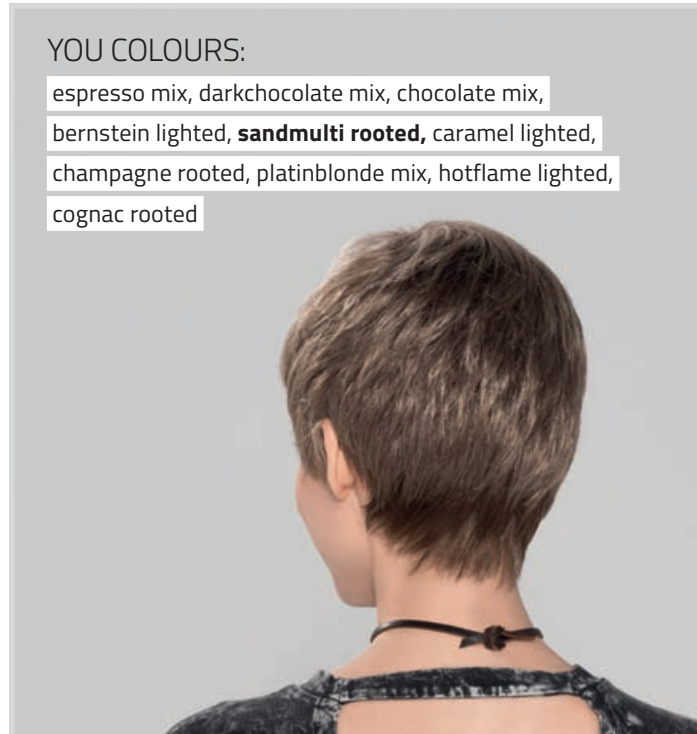
Una visione ispiratrice sta alla base di ogni innovazione. È orientata al futuro e diventa più forte quando lavoriamo ancor più intensamente alla nostra realizzazione. Ogni grande obiettivo ha inizio da un impulso. Ad essere decisivi sono l'ambizione, i sogni e le idee da realizzare. Si lasci ispirare dal potere della visione!

Una visión inspiradora es la base de la innovación. Está enfocada en el futuro y se concretiza su desarrollo cuanto más nos consagramos a ello. Cada gran objetivo comienza con una idea vaga. Lo determinante es tener la ambición de realizar sueños e ideas. ¡Inspírese con el poder de la visión!

Вдохновляющее провидение – основа инноваций. Оно нацелено в будущее и становится тем более совершенным, чем больше мы стремимся к его реализации. Любая большая цель начинается со смутной идеи. Решающим является желание реализовать мечты и идеи. Вдохновитесь силой провидения!



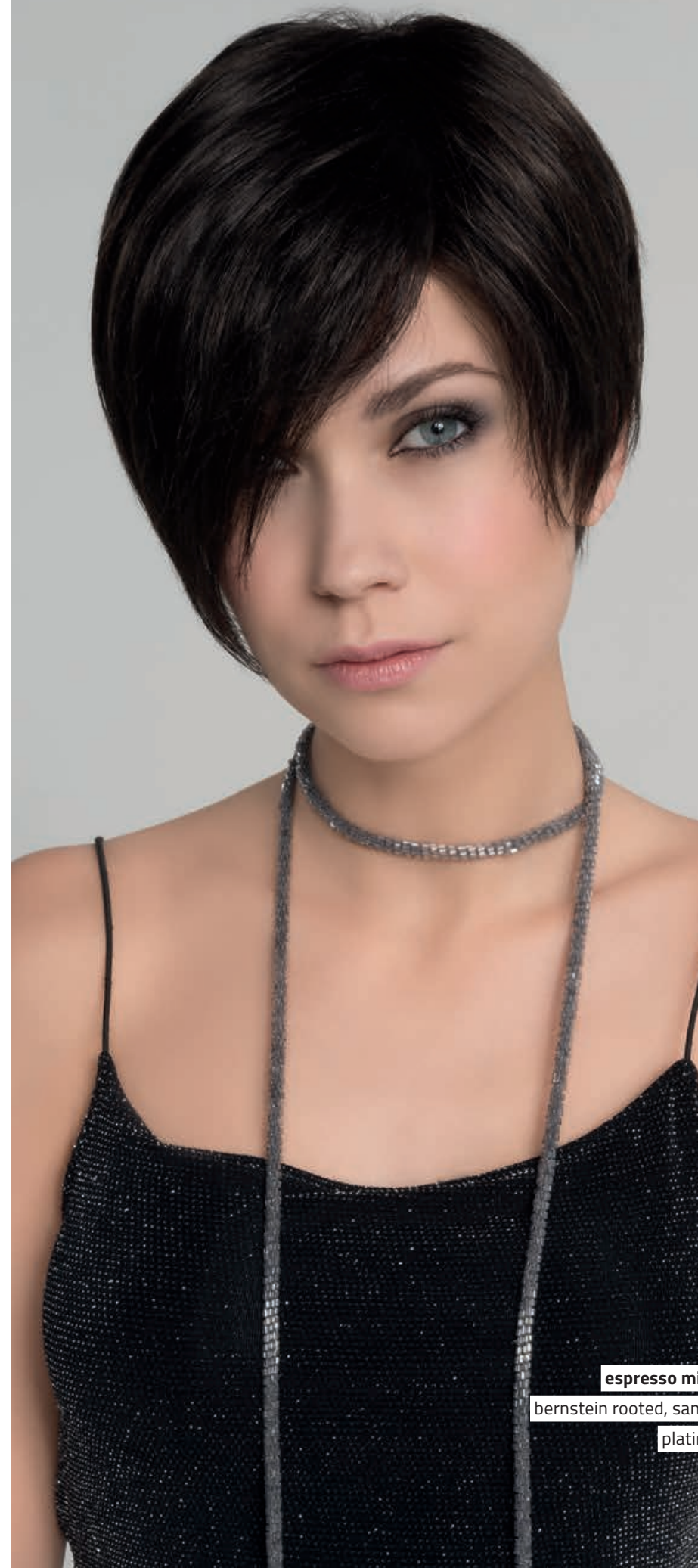
YOU ★



YOU COLOURS:

espresso mix, darkchocolate mix, chocolate mix, bernstein lighted, **sandmulti rooted**, caramel lighted, champagne rooted, platinblonde mix, hotflame lighted, cognac rooted

TREND MONO ★★★★★



TREND MONO COLOURS:

espresso mix, chocolate rooted, nougat rooted, mocca mix, bernstein rooted, sand rooted, sandyblonde mix, champagne rooted, platinblonde mix, darkauburn mix, safranred rooted, ginger rooted, darksnow mix, snow mix

DATE **



DATE COLOURS:

espresso mix, chocolate mix, hazelnut mix,
hazelnut rooted, bernstein mix, lightbernstein mix,
sand mix, lighthoney mix, **champagne mix**,
champagne rooted, darkauburn mix,
hotflame mix, ginger rooted

DATE MONO **** DATE LARGE **



DATE LARGE COLOURS:

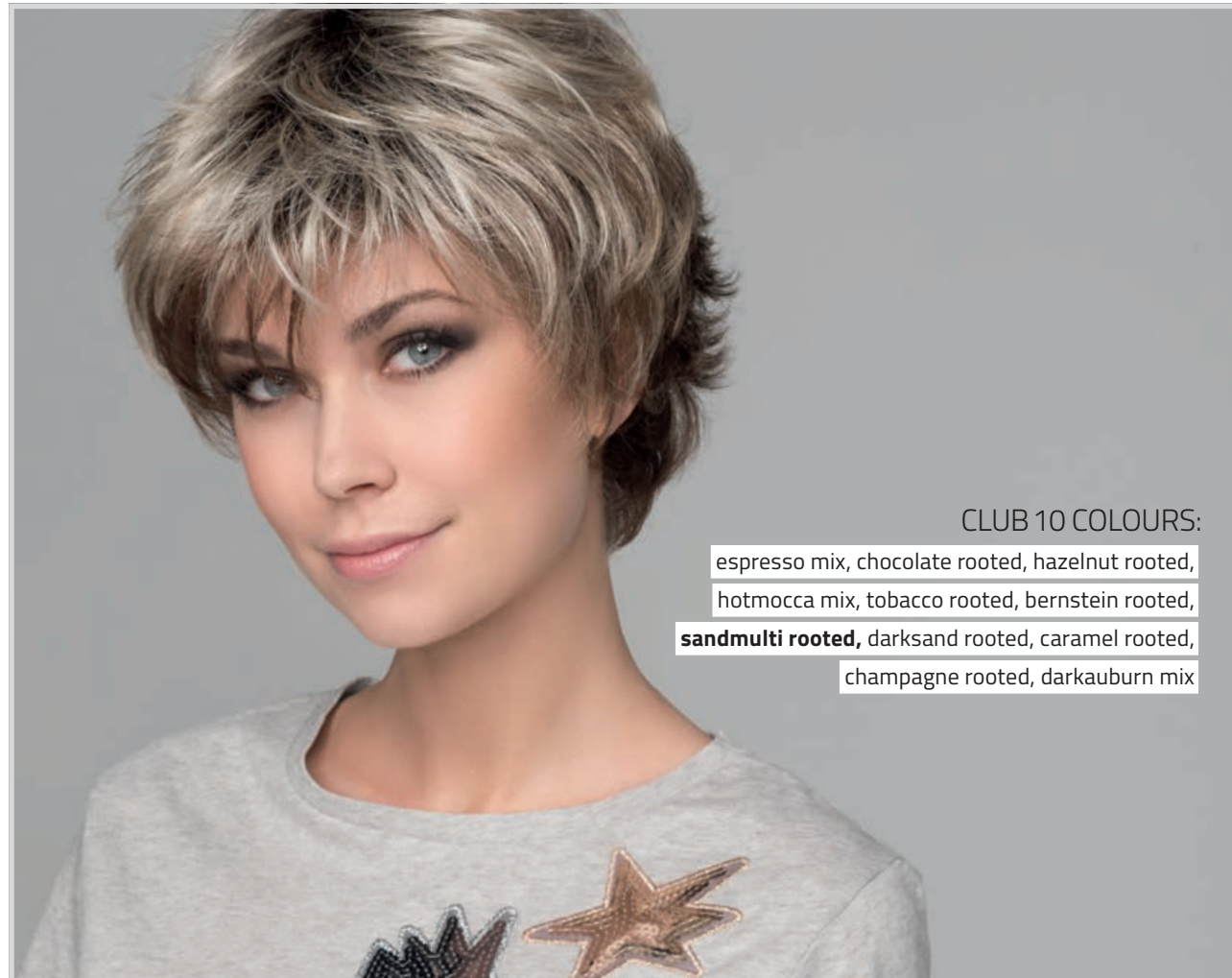
espresso mix, chocolate mix, hazelnut mix,
bernstein mix, sand mix, champagne rooted,
darkauburn mix, ginger rooted



DATE MONO COLOURS:

chocolate mix, hazelnut mix,
tobacco mix, lightbernstein rooted,
sandmulti rooted, darksand rooted,
sand mix, caramel mix, sandyblonde rooted,
champagne rooted, auburn mix

CLUB 10 **



CLUB 10 COLOURS:

espresso mix, chocolate rooted, hazelnut rooted,
hotmocca mix, tobacco rooted, bernstein rooted,
sandmulti rooted, darksand rooted, caramel rooted,
champagne rooted, darkauburn mix



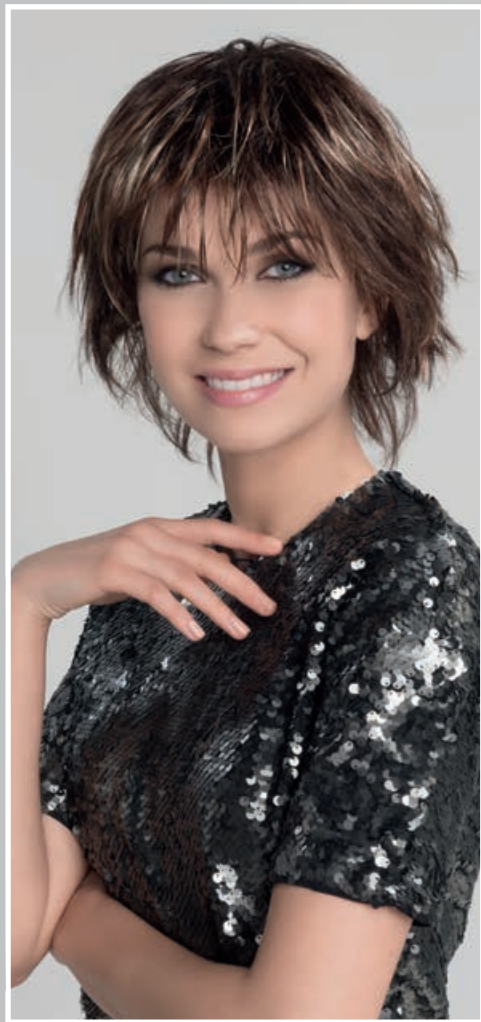
SKY **



SKY COLOURS:

espresso mix, chocolate mix, hotmocca rooted,
tobacco rooted, **darksand rooted**,
champagne rooted, lighthoney rooted,
auburn rooted, safranred rooted

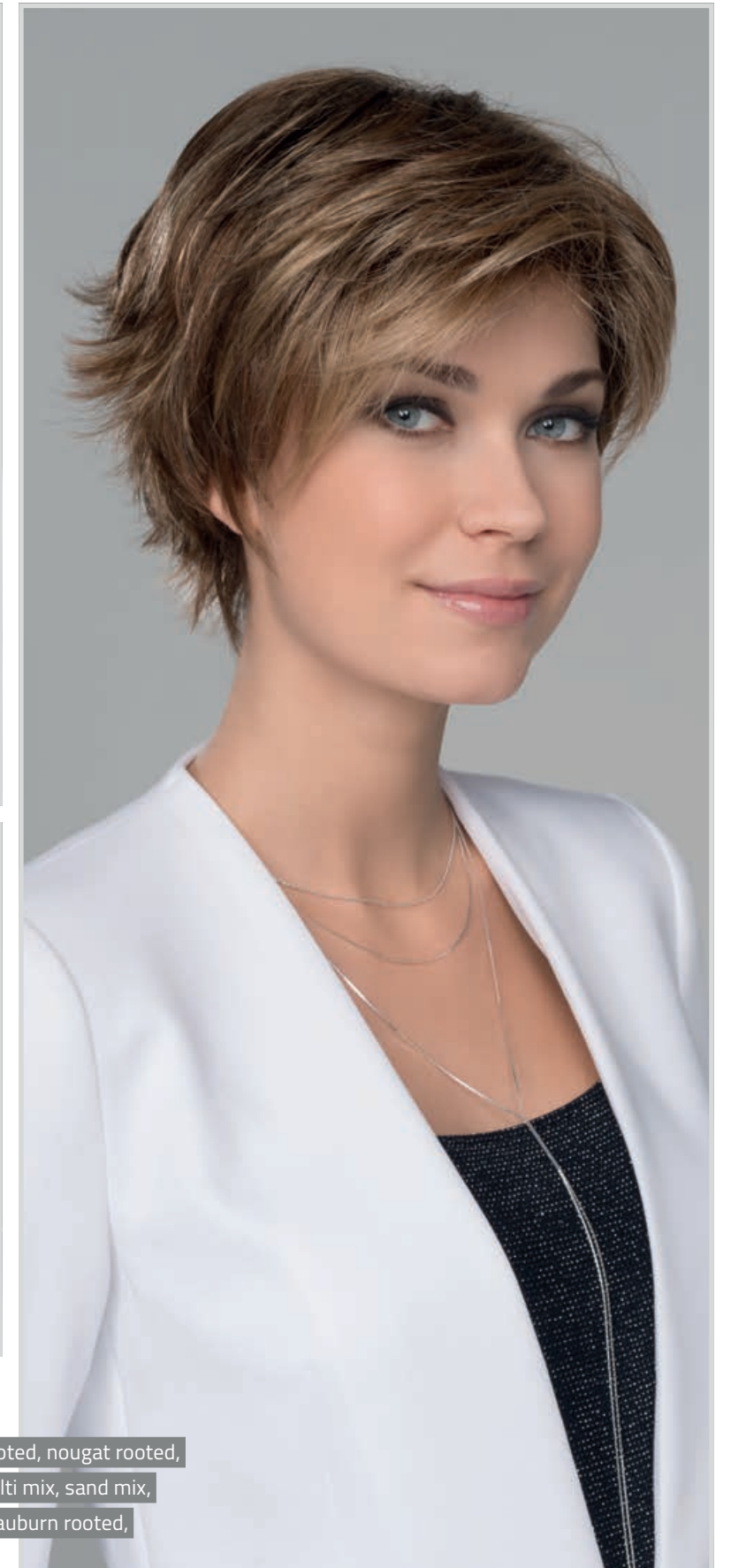
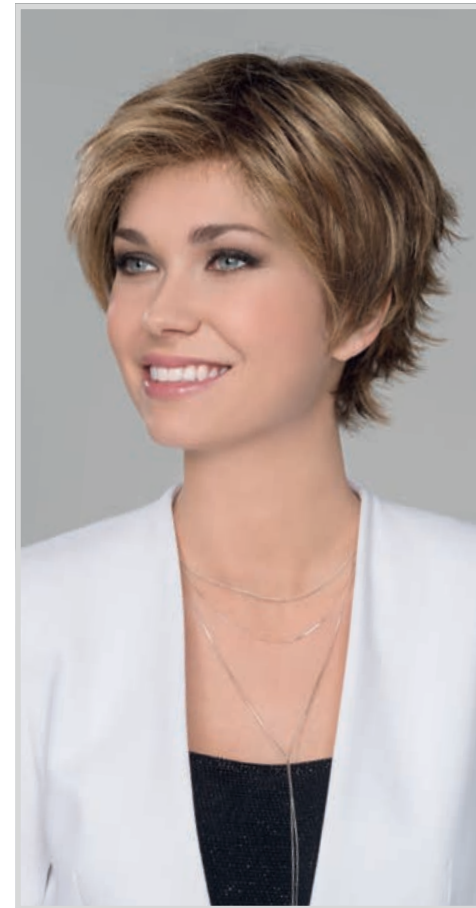
PLAY **



PLAY COLOURS:

espresso mix, **capuccino softened**, nougat rooted,
tobacco mix, bernstein rooted, darksand rooted, sand rooted,
champagne rooted, auburn rooted,
flame mix, safranred rooted

FLIP MONO ★★★★★



FLIP MONO COLOURS:

darkchocolate mix, chocolate mix, hazelnut rooted, nougat rooted,
mocca rooted, **lightbernstein rooted**, sandmulti mix, sand mix,
sandyblonde rooted, champagne rooted, darkauburn rooted,
pearlblonde rooted



The Power of Design

Gutes Design verbindet Innovation und Inspiration. Es drückt sich im Look und in der Verarbeitung aus. Design verbindet Funktion mit Ästhetik. Man kann es nicht nur sehen, sondern spüren. Erleben Sie die Macht des Designs!

Good design combines innovation and inspiration. It expresses itself in both look and processing. Design unites function and aesthetics. You can see and feel it. Experience the power of design!

Un bon design relie innovation et inspiration. Il se reflète dans le look et la finition. Le design relie fonction et esthétique. On peut aussi bien le voir que le ressentir. Expérimentez le pouvoir du design !

Un buon design connette innovazione e ispirazione. Prende vita nel look e nella lavorazione. Il design crea fusione tra funzionalità ed estetica. Non solo lo si può vedere bensì anche toccare con mano. Scopri il potere del design!

Un buen diseño combina innovación e inspiración. Se expresa en el aspecto y en el procesamiento. El diseño combina lo práctico con la estética. No solo se puede ver sino se puede sentir. ¡Experimente el poder del diseño!

Хороший дизайн сочетает в себе инновации и вдохновение. Он выражается в стиле и в обработке, сочетает функциональность с эстетикой. Вы можете не только видеть это, вы можете это почувствовать. Испытайте силу дизайна!





PUSH UP **



PUSH UP COLOURS:

black, espresso mix, **chocolate mix**,
hazelnut rooted, tobacco rooted, sandyblonde rooted,
champagne mix, aubergine mix, hotchilli mix,
cognac rooted, ginger rooted

CLEVER ***



CLEVER COLOURS:

espresso mix, chocolate rooted, **hazelnut rooted**,
hotmocca rooted, tobacco rooted, sand rooted,
lightcaramel rooted, sandyblonde rooted,
lightchampagne rooted, hotchilli rooted



KEIRA **



KEIRA COLOURS:

black/aubergine mix, espresso mix, darkchocolate mix,
chocolate rooted, mocca rooted, bernstein rooted,
sandmulti rooted, sand mix, **champagne rooted**,
hotchilli rooted, ginger rooted



CLICK *



CLICK COLOURS:

black, black/violet, espresso mix, darkchocolate mix,
chocolate mix, hotmocca mix, **tobacco mix**, darksand rooted,
sand rooted, champagne mix, champagne rooted, aubergine mix,
hotchilli mix, fire mix, cinnamon mix





RISK ★★



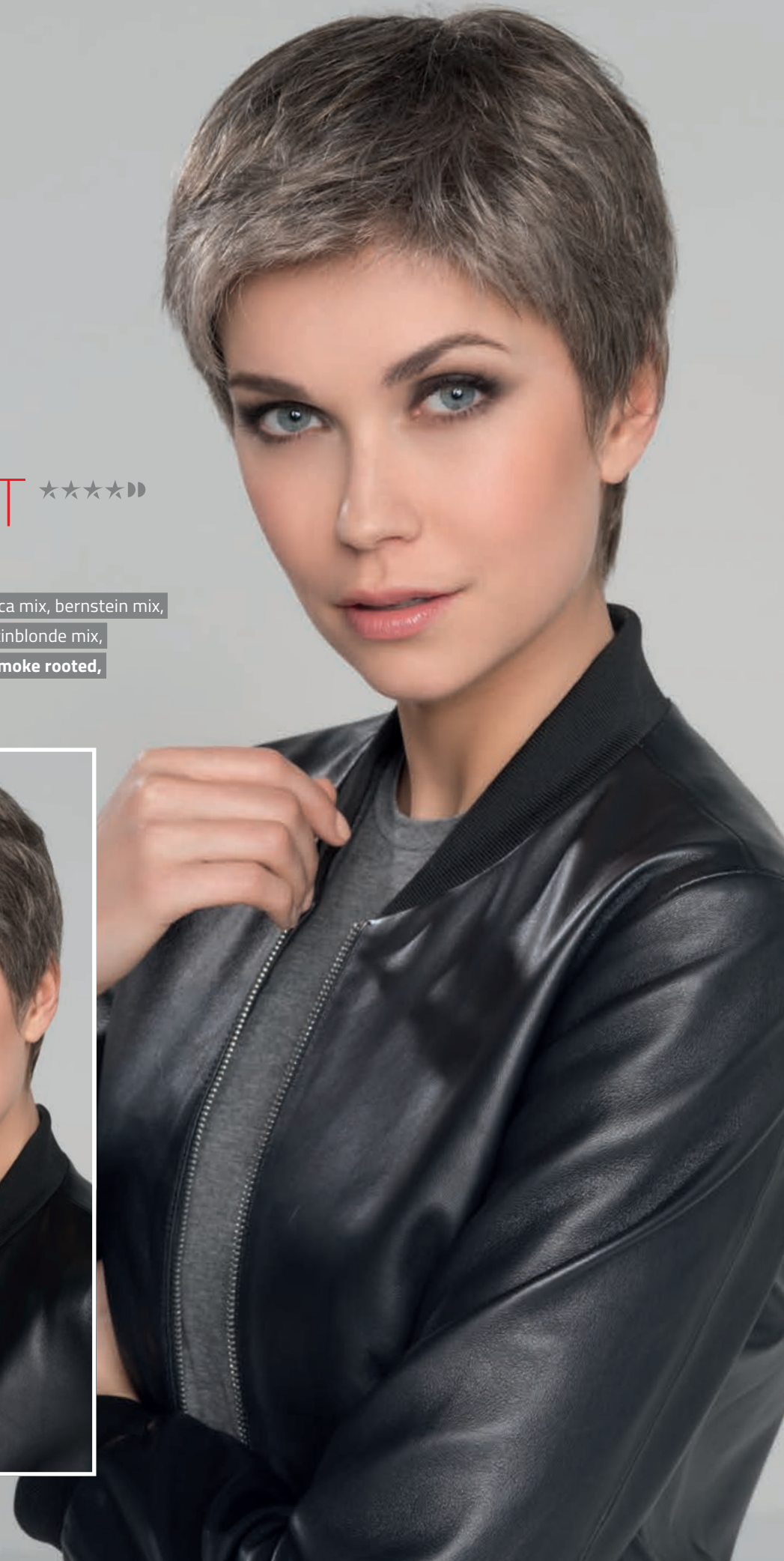
RISK COLOURS:

espresso mix, darkchocolate mix, chocolate mix, hotchocolate mix,
 mocca lighted, tobacco rooted, darksand mix, caramel mix,
 sandyblonde rooted, champagne mix, **lightchampagne rooted,**
 aubergine mix, darkauburn mix, ginger rooted, pepper mix,
 salt/pepper mix, smoke mix, snow mix, silver mix

RISK
 COMFORT ★★★★★

RISK COMFORT COLOURS:

espresso mix, chocolate mix, mocca mix, bernstein mix,
 sand mix, champagne rooted, platinblonde mix,
 auburn rooted, salt/pepper mix, **smoke rooted,**
 snow mix, silver rooted





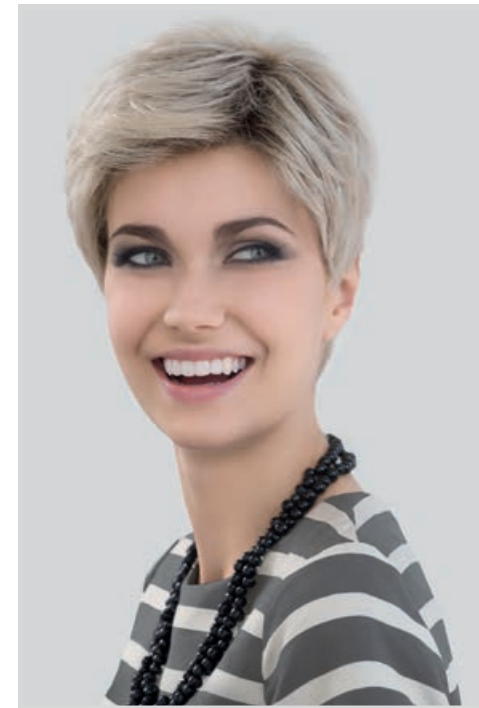
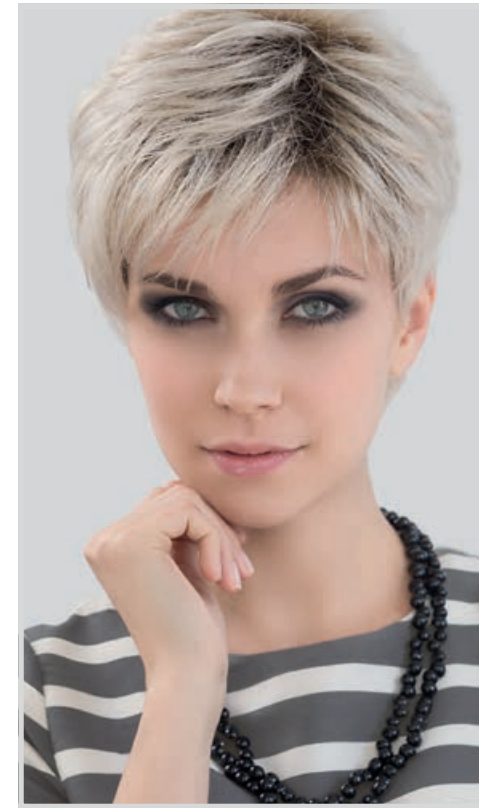
RISK SENSITIVE ★★



RISK SENSITIVE COLOURS:

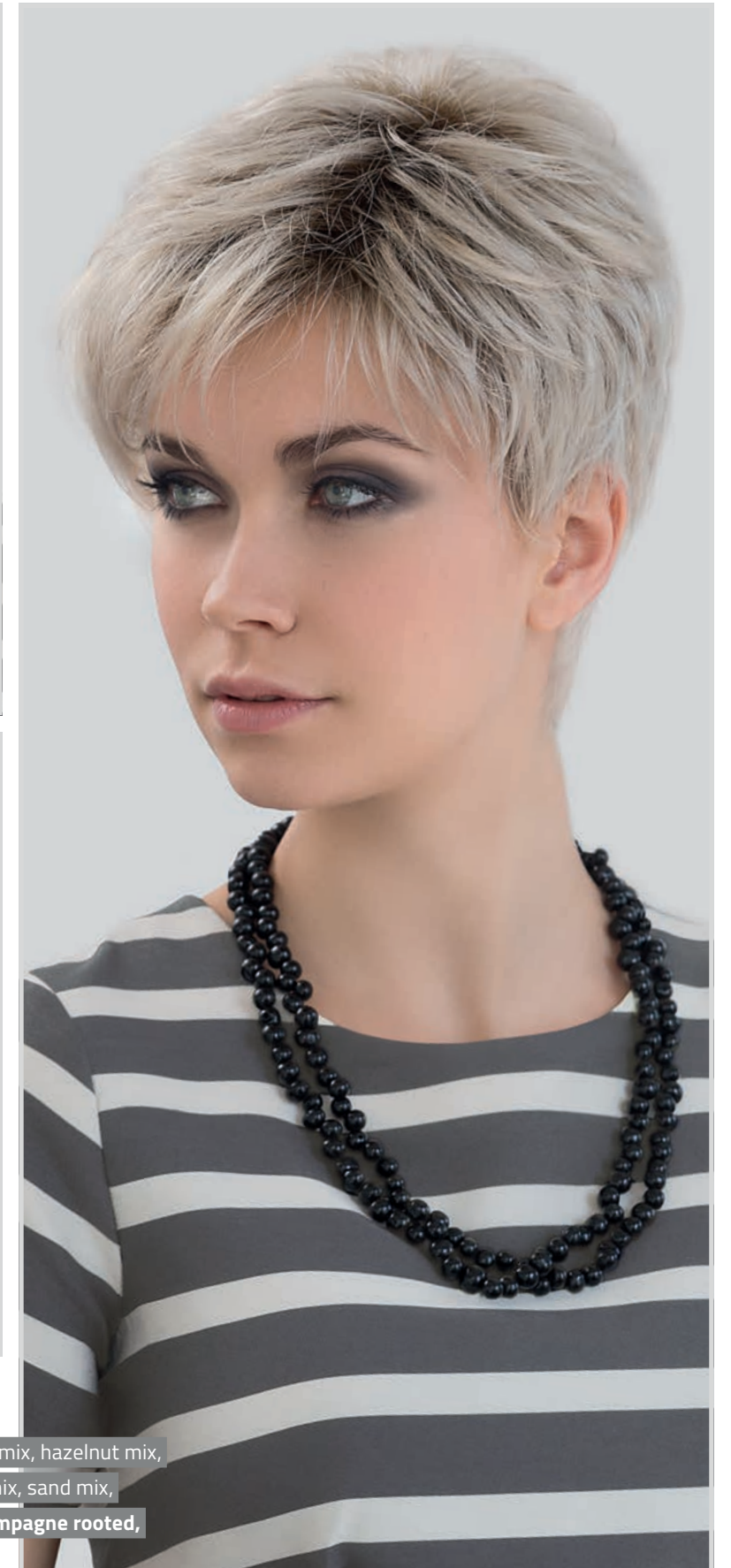
espresso mix, darkchocolate mix, chocolate mix, hotchocolate mix, mocca lighted, tobacco rooted, darksand mix, caramel mix, sandyblonde rooted, champagne mix, **lightchampagne rooted**, aubergine mix, darkauburn mix, ginger rooted, pepper mix, salt/pepper mix, smoke mix, silver mix

LOVE COMFORT ★★★★★



LOVE COMFORT COLOURS:

espresso rooted, chocolate mix, hotchocolate mix, hazelnut mix, nougat mix, lightbernstein rooted, darksand mix, sand mix, lighthoney mix, sandyblonde rooted, **lightchampagne rooted**, salt/pepper rooted, smoke mix, snow mix



GINGER ★★

GINGER COLOURS:

espresso mix, chocolate mix, coffeebrown mix,
bernstein mix, sand mix, champagne mix,
auburn mix, **salt/pepper mix**, smoke mix,
pearl mix, darksnow mix, white mix

GINGER MONO ★★★★★

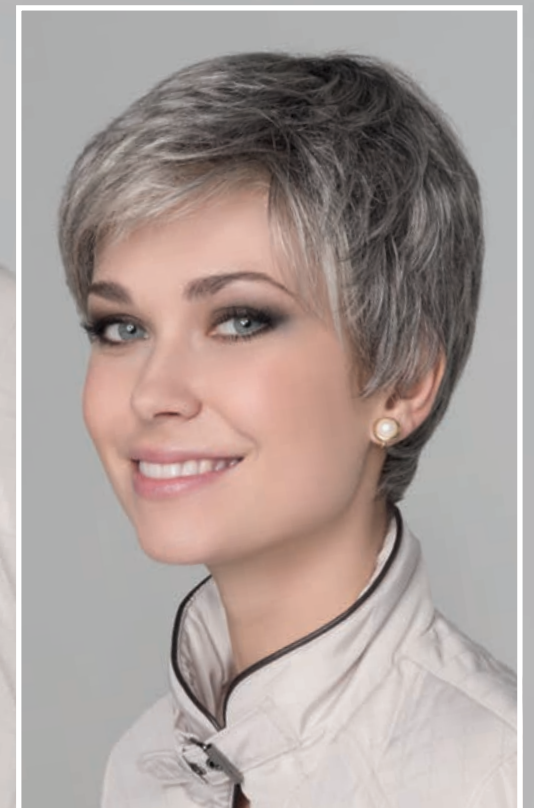
GINGER LARGE MONO ★★★★★

GINGER LARGE MONO COLOURS:

darkchocolate mix, coffeebrown mix, hazelnut mix,
lightbernstein mix, darksand mix,
champagne mix, smoke mix, snow mix

GINGER MONO COLOURS:

espresso mix, darkchocolate mix, coffeebrown mix, hazelnut mix,
lightbernstein mix, darksand mix, sandyblonde mix,
champagne mix, auburn mix, **salt/pepper mix**, smoke mix,
pearl mix, snow mix, silver mix



GINGER SMALL ★★▶



GINGER SMALL COLOURS:

chocolate mix, coffeebrown mix, bernstein mix,
sand mix, champagne mix, smoke mix,
stonegrey mix, pearl mix, white mix

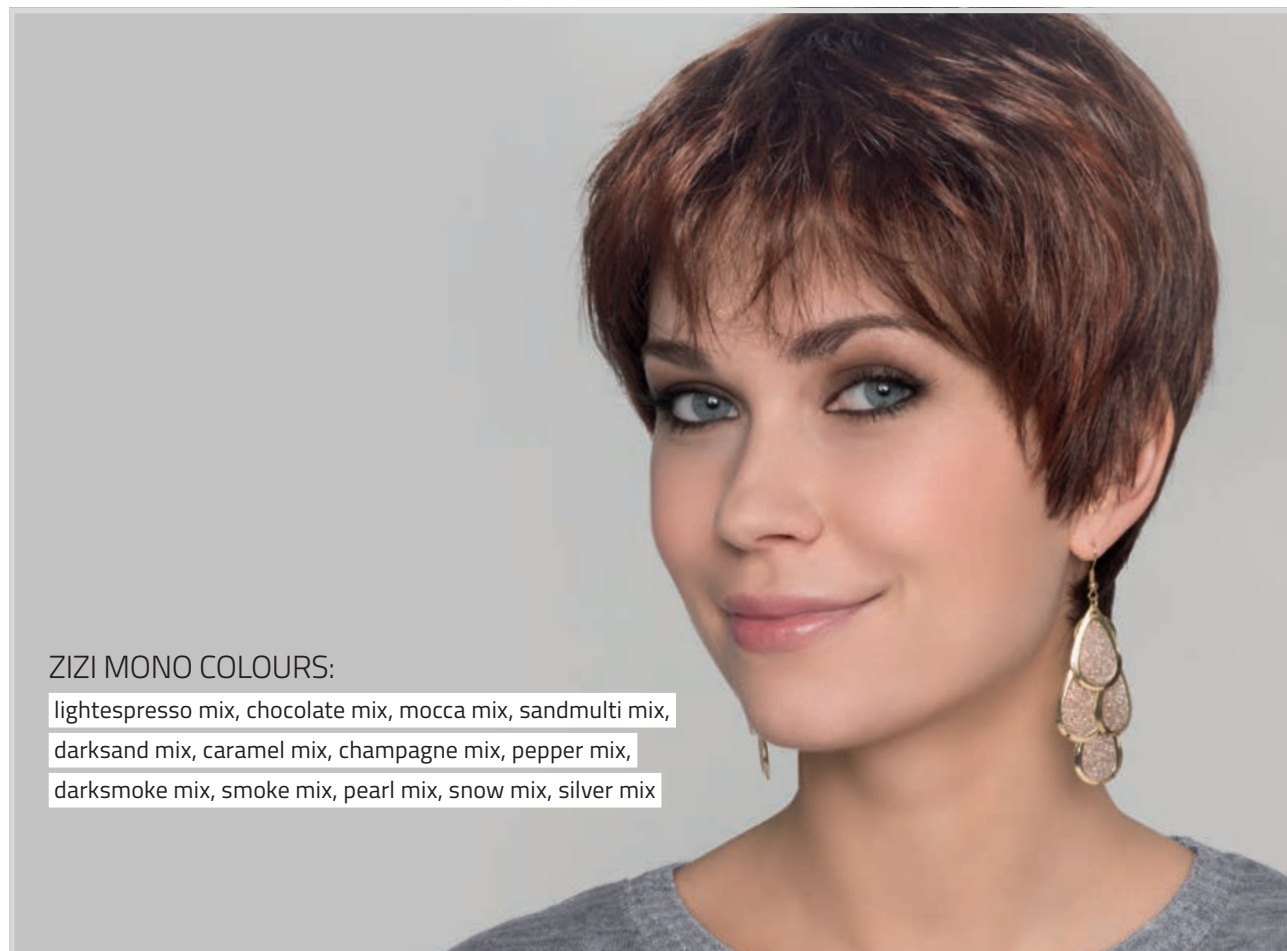
LIZA SMALL DELUXE ★★★★★▶▶



LIZA SMALL DELUXE COLOURS:

chocolate mix, mocca rooted, **darksand mix**,
lightsand mix, caramel mix, champagne rooted,
smoke mix, pearl mix, snow mix

ZIZI MONO ★★★★★
ZIZI ★★



ZIZI MONO COLOURS:

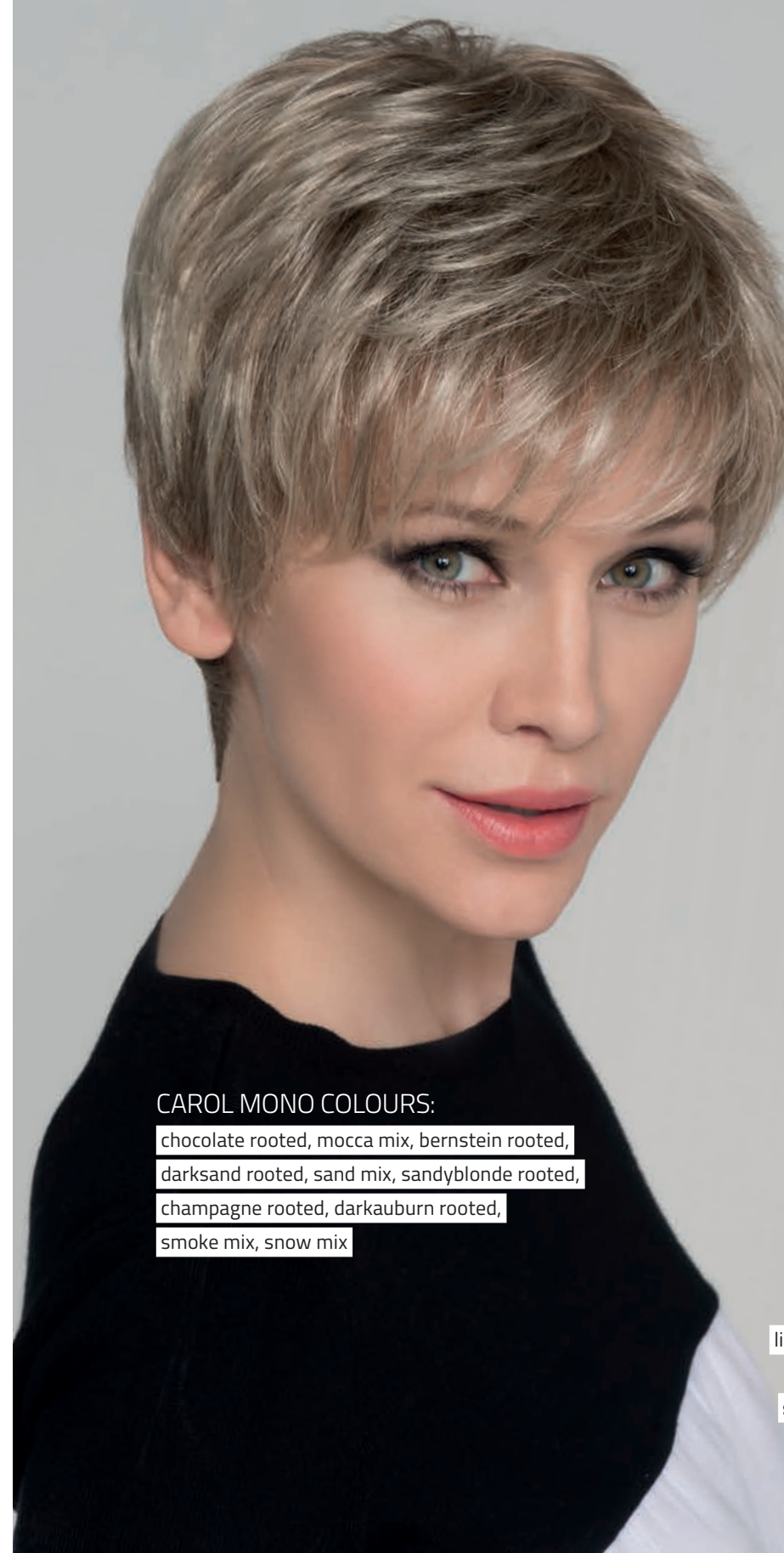
lightespresso mix, chocolate mix, mocca mix, sandmulti mix,
darksand mix, caramel mix, champagne mix, pepper mix,
darksmoke mix, smoke mix, pearl mix, snow mix, silver mix



ZIZI COLOURS:

black, lightespresso mix, coffeebrown mix,
chocolate mix, sandmulti mix, darksand mix, sand mix,
caramel mix, sandyblonde mix, lightchampagne mix,
darkauburn mix, **auburn mix**, salt/pepper mix,
smoke mix, darksnow mix, silver mix

CAROL MONO ★★★★★
CAROL ★★



CAROL MONO COLOURS:

chocolate rooted, mocca mix, bernstein rooted,
darksand rooted, sand mix, sandyblonde rooted,
champagne rooted, darkauburn rooted,
smoke mix, snow mix



CAROL COLOURS:

lightespresso mix, chocolate mix, sandmulti mix,
darksand mix, sand mix, caramel mix,
sandyblonde mix, champagne mix, auburn mix,
smoke mix, darksnow mix, snow mix



The Power of Luxury

Wahrer Luxus drückt sich in der Zeit aus, die wir für unsere Leidenschaften aufbringen. Er offenbart sich in den Momenten, in denen wir innehalten können. Luxus drückt sich in Details aus. Wir bei ellen wille leisten uns den Luxus, unsere Produkte immer weiter zu verbessern und geben uns mit nicht weniger als allerhöchster Qualität zufrieden. Gönnen Sie sich die Macht des Luxus!

True luxury reflects the amount of time we are able to spend with our passions. It manifests itself in those instants we can take time to pause and to enjoy the momentum. Luxury expresses itself in details. We, at ellen wille allow ourselves the luxury to improve our products on and on without ever being satisfied with less than highest quality standards. Allow yourself the power of luxury.

Le véritable luxe c'est de pouvoir accorder du temps à ses passions. Il s'apprécie lorsque nous nous autorisons une pause. Le luxe s'exprime dans les détails. Chez nous, ellen wille, nous nous offrons le luxe d'améliorer continuellement nos produits et de ne nous satisfaire que de la meilleure qualité. Profitez du pouvoir du luxe !

Il vero lusso prende forma nel tempo che dedichiamo alle nostre passioni. Si rivela nei momenti in cui possiamo fermarci a riflettere. Il lusso si concretizza nei dettagli. Noi di ellen wille ci permettiamo il privilegio di migliorare sempre di più i nostri prodotti e di essere soddisfatti solo una volta raggiunta la più alta qualità. Si faccia trasportare dal potere del lusso!

El verdadero lujo se expresa en el tiempo que dedicamos a nuestras pasiones. Él se revela en los momentos que destinamos a la reflexión. El lujo se expresa en detalles. En ellen wille, tenemos el lujo de mejorar continuamente nuestros productos y estar satisfechos con nada menos que la más alta calidad. ¡Aproveche el poder del lujo!

Истинная роскошь выражается в том времени, которое мы можем посвятить нашим пристрастиям. Мы ощущаем это в те моменты, когда можем остановиться. Роскошь проявляется в деталях. В ellen wille мы позволяем себе роскошь постоянно совершенствовать наши продукты и быть удовлетворёнными только самым высоким качеством. Позвольте себе роскошь!





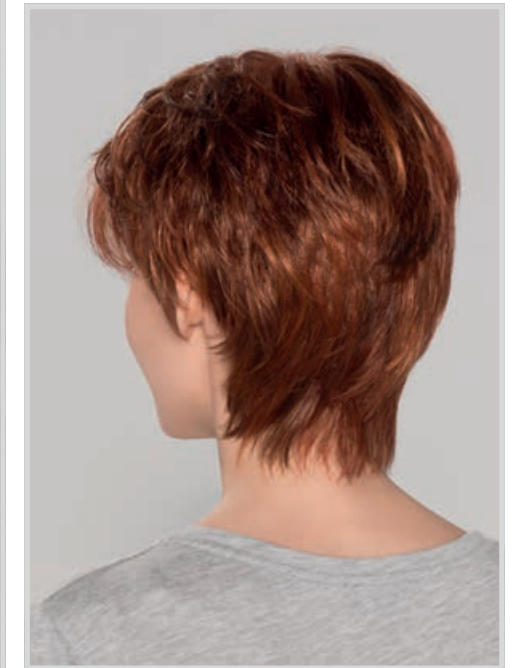
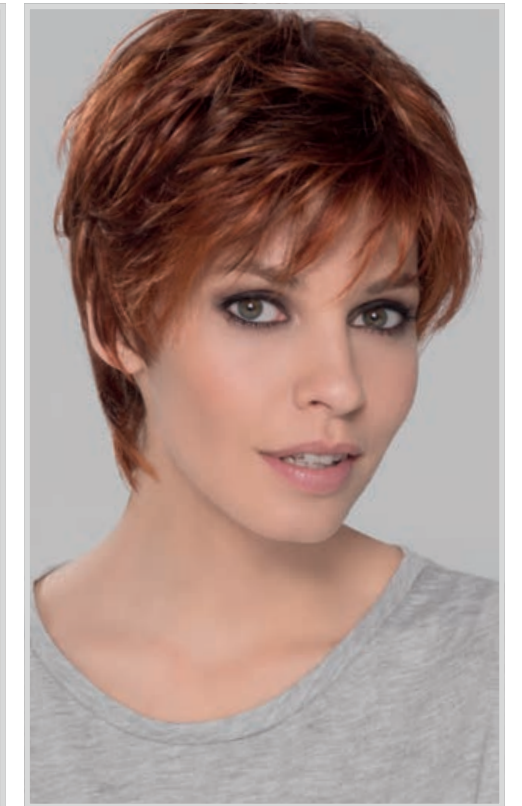
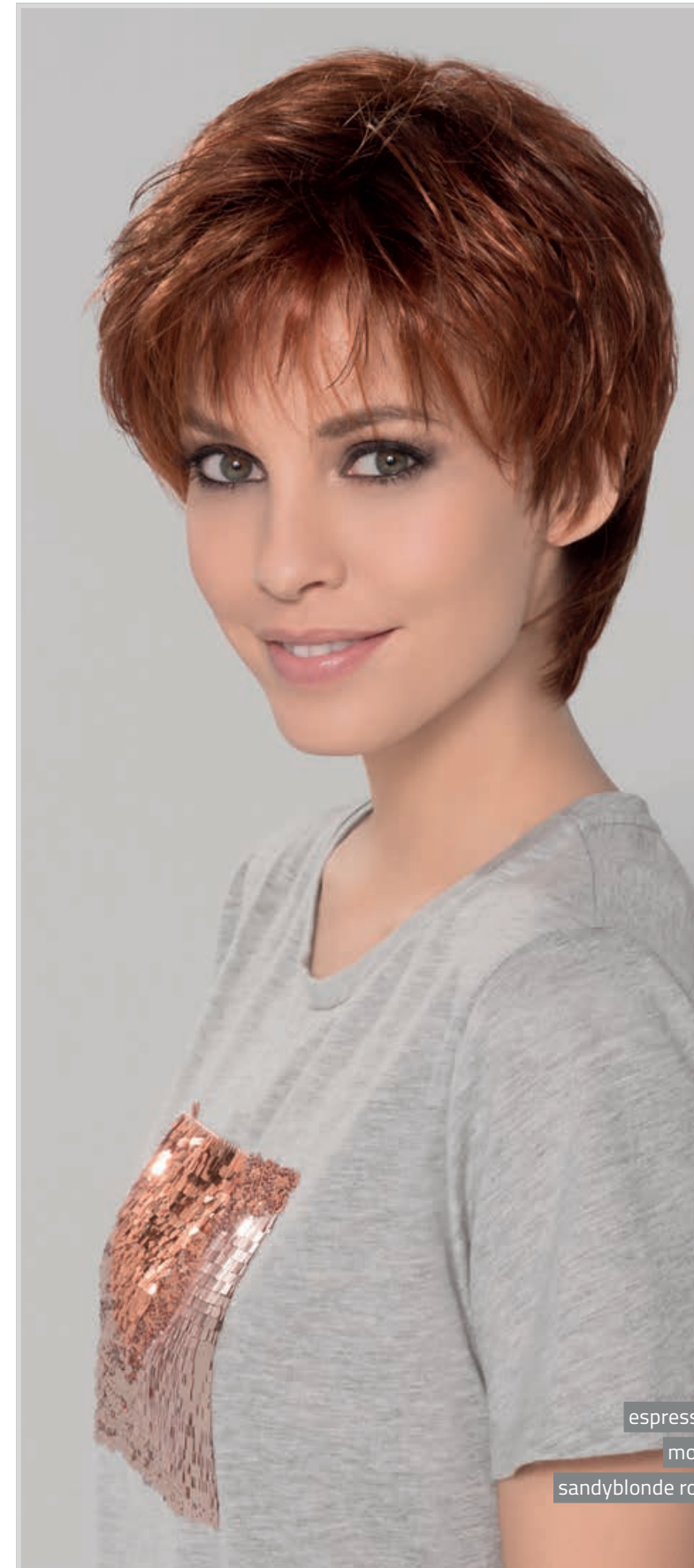
COCO ★★▶



COCO COLOURS:

espresso mix, chocolate mix, hazelnut mix, mocca rooted, lightbernstein rooted, sand rooted, **lighthoney mix**, champagne rooted, platinblonde rooted, auburn mix, salt/pepper mix, stonegrey mix, pearl mix, snow mix, silver mix

IVY ★★▶



IVY COLOURS:

espresso rooted, darkchocolate rooted, chocolate rooted, mocca rooted, lightbernstein rooted, caramel rooted, sandyblonde rooted, champagne rooted, lightchampagne rooted, flame mix, **hotcinnamon mix**, cognac mix, salt/pepper mix, snow mix

JOLLY ★



JOLLY COLOURS:

cosmoblack mix, espresso mix, darkchocolate mix, chocolate rooted, mocca rooted, **lightbernstein rooted**, darksand rooted, lighthoney rooted, sandyblonde rooted, lightchampagne rooted, aubergine mix, hotchilli mix, mangored mix, salt/pepper mix, darksnow rooted, silver rooted

GOLF ★



GOLF COLOURS:

black, espresso mix, chocolate mix, hazelnut mix, bernstein rooted, lightbernstein mix, sandmulti mix, sand mix, sandyblonde rooted, champagne mix, aubergine mix, auburn mix, hotchilli mix, **cognac mix**, ginger rooted, pearl rooted

FAIR MONO ★★★★★
FAIR ★★



FAIR MONO COLOURS:

espresso mix, chocolate rooted, hazelnut rooted,
tobacco rooted, bernstein rooted, sandmulti rooted,
sand rooted, sandyblonde rooted,
champagne rooted, auburn rooted, ginger rooted,
salt/pepper rooted, snow mix



FAIR COLOURS:

espresso mix, chocolate mix, tobacco rooted,
lightbernstein rooted, sand mix, sandyblonde rooted,
champagne rooted, lightchampagne rooted,
aubergine mix, auburn rooted, safranred rooted



FLEX ★



FLEX COLOURS:

espresso mix, chocolate rooted, **mocca rooted**,
bernstein rooted, caramel rooted, sandyblonde rooted,
champagne rooted, auburn mix, flame rooted,
salt/pepper mix, silverblonde rooted

CARA 100 DELUXE ★★★★★★
 CARA SMALL DELUXE ★★★★★★



CARA 100 DELUXE COLOURS:
 darkchocolate mix, chocolate mix, mocca rooted,
 bernstein rooted, darksand mix, sandyblonde mix,
 champagne mix, smoke mix, pearl mix,
silver mix, white mix



CARA SMALL DELUXE COLOURS:
 chocolate mix, mocca rooted, sandmulti mix,
 darksand mix, caramel mix, champagne mix,
 smoke mix, pearl mix, snow mix



BO MONO ★★★★★



BO MONO COLOURS:
 hotespreso mix, darkchocolate mix, mocca mix,
 lightbernstein rooted, darksand rooted,
sandyblonde rooted, champagne rooted, auburn mix,
 pearlblonde rooted, snow mix

LIGHT MONO ★★★★★



LIGHT MONO COLOURS:

darkchocolate mix, chocolate mix, nougat mix,
sandmulti mix, darksand mix, sand mix, caramel mix,
champagne mix, salt/pepper mix, darksmoke mix,
smoke mix, stonegrey mix, **pearl mix**,
darksnow mix, snow mix



ONLY MONO ★★★★★



ONLY MONO COLOURS:

espresso mix, darkchocolate mix, hazelnut mix,
mocca rooted, lightbernstein mix, darksand mix,
sandyblonde mix, champagne mix, auburn mix,
salt/pepper mix, **smoke mix**, snow mix



RUN
MONO ★★★★★



RUN MONO COLOURS:

espresso rooted, darkchocolate rooted, chocolate rooted,
cinnamonbrown mix, nougat rooted, tobacco rooted, darksand rooted,
sandyblonde rooted, **lightchampagne rooted**, hotcinnamon mix,
cognac mix, stonegrey mix, pearlblonde rooted,
snow mix, white mix

FOXY ★

FOXY
SMALL ★

FOXY COLOURS:

espresso mix, darkchocolate rooted, chocolate mix,
bernstein rooted, **sandmulti rooted**, darksand rooted,
sandyblonde rooted, champagne mix, auburn mix,
salt/pepper mix, snow mix



FOXY SMALL
COLOURS:

espresso mix, chocolate mix, bernstein rooted,
sandmulti rooted, darksand rooted, champagne mix,
salt/pepper mix, snow mix





The Power of Fashion

Wahrer Stil kommt niemals aus der Mode. Die Mode ist der Pinsel, der uns hilft, die Farbtupfer zu setzen und Nuancen aufzutragen, die das Bild von uns selbst vervollständigen. Das schönste Accessoire ist unsere Ausstrahlung. Keine Scheu – nutzen Sie die Macht der Mode!

True style will always be in vogue. Fashion is the paintbrush that helps us applying the shades of colour to complete the picture of ourselves. The most beautiful accessory is our aura. Do not be shy! Make use of the power of fashion!

Le vrai style ne se démode jamais. La mode, c'est le pinceau qui nous permet de mettre des touches de couleur et d'apporter des nuances qui complètent notre image personnelle. Un bel accessoire illumine votre look. Pas de honte ! Utilisez le pouvoir de la mode !

Il vero stile non proviene dalla moda. La moda è il pennello che ci aiuta a fissare le basi dei colori e le loro sfumature, che perfezionano il quadro di noi stessi. L'accessorio più bello è il nostro carisma. Non si ponga limiti! Usi il potere della moda!

El verdadero estilo nunca pasa de moda. La moda es el pincel que nos ayuda a establecer las salpicaduras de color y aplicar matices que completan la imagen de uno mismo. El accesorio más hermoso es nuestro carisma. ¡No sea tímido! ¡Use el poder de la moda!

Истинный стиль никогда не выходит из моды. Moda – это кисть, с помощью которой мы можем поставить цветовые акценты и подчеркнуть нюансы, дополняющие картину нашего образа. Самый красивый аксессуар – наша харизма. Не стесняйтесь! Используйте силу моды!



TAKE **

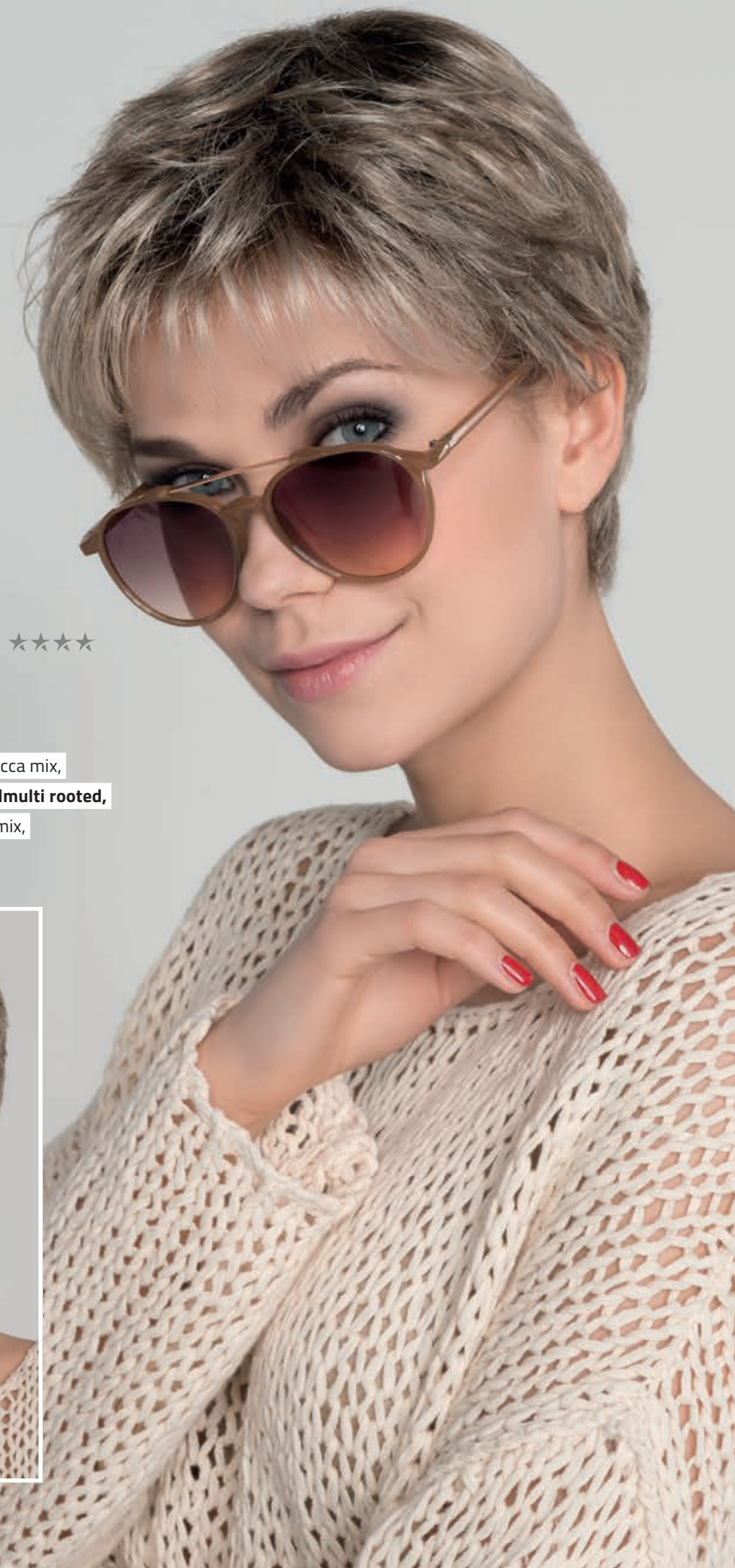


TAKE COLOURS:
espresso mix, darkchocolate mix, chocolate mix,
tobacco rooted, sandmulti mix, darksand mix,
sandyblonde rooted, smoke mix, snow mix, white mix

MIA MONO ****

MIA MONO COLOURS:

darkchocolate mix, chocolate mix, hotmocca mix,
hazelnut mix, lightbernstein rooted, **sandmulti rooted**,
sand mix, champagne mix, platinblonde mix,
auburn mix, salt/pepper mix, snow mix





START **

START COLOURS:
 espresso rooted, darkchocolate rooted, chocolate rooted,
 tobacco rooted, sandmulti rooted, sand rooted,
 caramel rooted, champagne rooted, **pastelblonde rooted,**
 hotflame lighted, cinnamon mix



SCORE **

SCORE COLOURS:
 espresso rooted, darkchocolate rooted,
 chocolate rooted, hotmocca rooted, tobacco rooted,
 sand rooted, pastelblonde rooted, **lightchampagne rooted,**
 auburn rooted, cognac rooted

EVER MONO ★★★★★



EVER MONO COLOURS:

darkchocolate mix, chocolate mix, hazelnut rooted, bernstein rooted, sandmulti rooted, sand rooted, **caramel mix**, champagne rooted, pearlblonde rooted, cinnamon mix, salt/pepper mix, snow mix

SMART MONO ★★★★★ SMART LARGE MONO ★★★★★



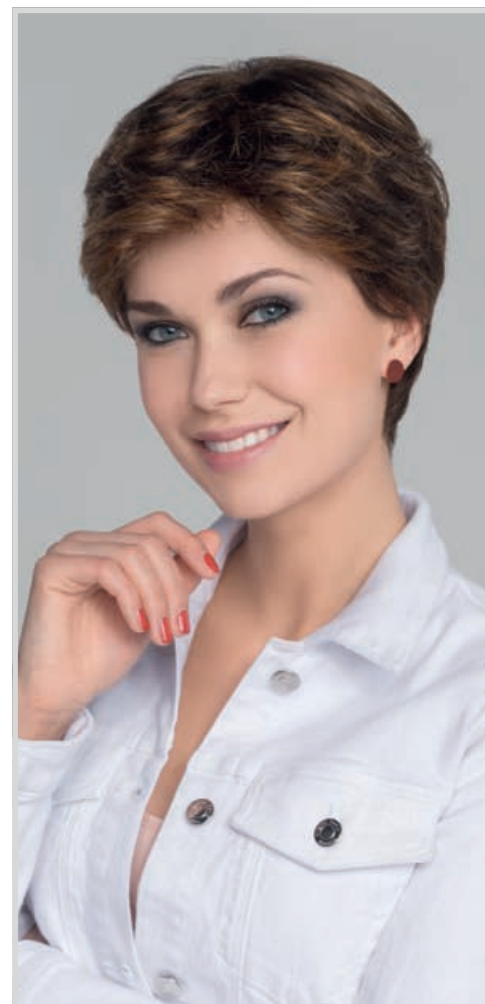
SMART MONO COLOURS:

espresso mix, darkchocolate mix, chocolate mix, hazelnut rooted, mocca mix, **bernstein rooted**, darksand rooted, sand mix, sandyblonde rooted, champagne mix, auburn rooted, salt/pepper mix, smoke mix, snow mix

SMART LARGE MONO COLOURS:

espresso mix, chocolate mix, hazelnut rooted, mocca mix, **darksand rooted**, sandyblonde rooted, champagne mix, smoke mix, snow mix

SPRING MONO ★★★★★



SPRING MONO COLOURS:

darkchocolate mix, chocolate mix, **hazelnut mix**, bernstein mix, sand mix, sandyblonde mix, lightcaramel rooted, champagne mix, darkauburn mix, salt/pepper mix, smoke mix, pearl mix, snow mix, white mix



SPRING HI ★★★



SPRING HI COLOURS:

espresso mix, darkchocolate mix, chocolate mix, hotchocolate mix, nougat rooted, mocca rooted, lightbernstein rooted, sandmulti rooted, sand rooted, champagne rooted, platinblonde rooted, auburn rooted, hotchilli rooted, safranred rooted, **salt/pepper mix**, snow mix

GOLD **



GOLD COLOURS:

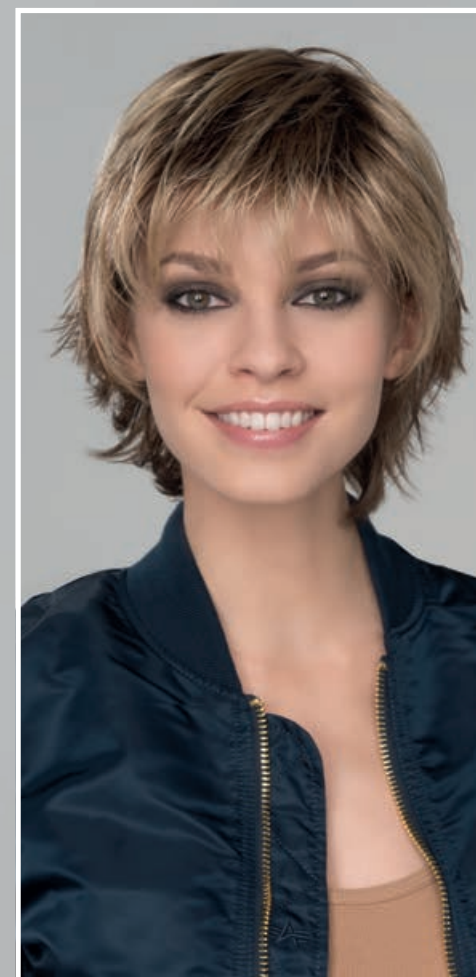
espresso rooted, darkchocolate mix, nougat mix,
bernstein rooted, sandmulti rooted, sand rooted,
champagne rooted, auburn mix, **cinnamon mix**,
smoke mix, darksnow mix



GEMMA MONO ****

GEMMA MONO COLOURS:

espresso mix, chocolate rooted, hazelnut rooted,
hotmocca rooted, tobacco rooted, lightbernstein rooted,
darksand rooted, **caramel rooted**, lighthoney rooted,
champagne rooted, auburn rooted





The Power of Love

Liebe ist die mächtigste Kraft der Welt. Liebe überwindet alle Barrieren. Liebe vermehrt sich, wenn man sie teilt. Es gibt keine Einheit, um die Kraft der Liebe nur im Ansatz zu bemessen. Wir haben unendlich viel Liebe und Hingabe in die Entwicklung unserer Modelle gesteckt. Lassen Sie sich mitreißen von der Macht der Liebe!

Love is the most powerful force in the world. Love overcomes all barriers. Love increases when shared. No unit could ever measure the power of love near enough. We have put endless affection and devotion into the development of our models. Let yourself carry away by the power of love!

L'amour est la plus grande force du monde. L'amour passe au dessus de toutes les barrières. L'amour prospère si on le partage. Il n'y a pas d'unité de mesure de la force de l'amour. Nous avons mis un amour infini et beaucoup de dévouement dans le développement de nos modèles. Laissez-vous emporter par la force de l'amour !

L'amore è la forza più grande al mondo. L'amore si diffonde quando lo si condivide. Non esiste essere che possa misurare la forza dell'amore. Abbiamo dedicato amore infinito e dedizione al miglioramento delle nostre parrucche. Si lasci trasportare dal potere dell'amore!

El amor es la fuerza más poderosa del mundo. El amor supera todas las barreras. El amor se multiplica cuando se comparte. No hay unidad que pueda solo medir el poder del amor. Hemos invertido un cariño y una dedicación infinitos en el desarrollo de nuestros modelos. ¡Déjese llevar por el poder del amor!

Любовь – самая могущественная сила в мире. Она преодолевает все барьеры. Любовь умножается, когда вы делитесь ею. Нет меры, которая могла бы оценить даже силу появления любви. Мы вложили бесконечное количество любви и самоотверженности в развитие наших моделей. Позвольте себе увлечься силой любви!



SOLITÄR HI MONO ★★★★★



SOLITÄR HI MONO COLOURS:

chocolate mix, mocca mix, **sandmulti mix**,
sand rooted, sandyblonde mix,
champagne rooted, smoke mix, pearl mix,
darksnow mix, snow mix, white mix



TRAVEL MONO ★★★★★



TRAVEL MONO COLOURS:

espresso rooted, darkchocolate rooted, chocolate rooted, cinnamonbrown mix,
mocca mix, lightbernstein rooted, sandmulti rooted, sand rooted,
sandyblonde rooted, pastelblonde rooted, safranred rooted, ginger mix,
salt/pepper rooted, **smoke mix**, silvergrey rooted





STOP
HI TEC **



STOP HI TEC COLOURS:
black, chocolate mix, hazelnut mix, bernstein rooted,
darksand rooted, sand mix, champagne mix,
champagne rooted, aubergine mix, darkauburn mix,
auburn rooted, flame mix, ginger rooted

SEVEN SUPER ***



SEVEN SUPER COLOURS:
espresso mix, chocolate mix, tobacco rooted,
bernstein rooted, sandmulti mix, champagne mix,
lightchampagne mix, darkauburn mix,
salt/pepper mix, snow mix

SMILE MONO ★★★▶



SMILE MONO COLOURS:

espresso mix, chocolate rooted, **nougat rooted**,
mocca rooted, lightbernstein rooted, darksand mix,
caramel mix, lighthoney rooted, champagne rooted,
pearl mix, darksnow mix, silver mix



BEAM ★★



BEAM COLOURS:

espresso rooted, chocolate rooted, hotchocolate rooted,
mocca lighted, lightbernstein rooted, caramel rooted,
champagne rooted, **lightchampagne rooted**, flame mix

SUE MONO ★★★



SUE MONO COLOURS:

espresso mix, darkchocolate mix, chocolate mix,
darksand rooted, sand mix, champagne mix,
lightchampagne mix, auburn mix,
smoke mix, snow mix



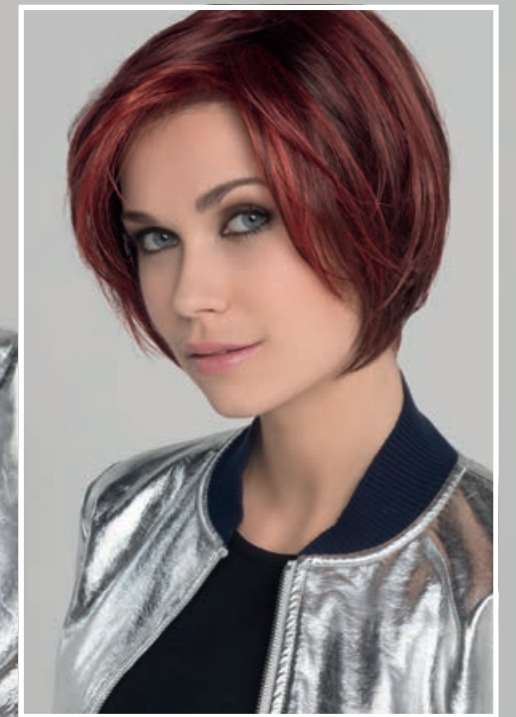
SMOKE HI MONO ★★★▶



SMOKE HI MONO COLOURS:
 black, espresso mix, chocolate mix,
 hazelnut mix, bernstein rooted, sand mix,
 caramel rooted, **sandyblonde rooted**,
 champagne mix, darkauburn mix



TALIA MONO ★★★▶



TALIA MONO COLOURS:
 espresso mix, darkchocolate mix, chocolate mix,
 hotmocca rooted, lightbernstein rooted, darksand rooted,
 champagne rooted, lightchampagne rooted,
 blackcherry mix, **hotflame mix**, cognac mix, ginger rooted,
 salt/pepper mix, snow mix

YOUNG MONO ★★★▶



YOUNG MONO COLOURS:

espresso mix, darkchocolate mix, chocolate mix,
mocca mix, lightbernstein rooted, sand mix,
lighthoney rooted, **champagne rooted**, hotchilli mix



FRESH ★★★



FRESH COLOURS:

espresso mix, chocolate rooted, hazelnut mix,
lightbernstein rooted, sandyblonde rooted,
champagne rooted, darkauburn rooted, ginger mix



AMY SMALL DELUXE ★★★★★▶



AMY SMALL DELUXE COLOURS:
 chocolate mix, darknougat mix, **mocca mix**,
 caramel mix, sandyblonde rooted, champagne mix,
 salt/pepper mix, lightpearl mix

AMY DELUXE ★★★★★▶



AMY DELUXE COLOURS:
 espresso mix, chocolate mix, mocca rooted, tobacco mix,
 lightbernstein rooted, sand rooted, **lightcaramel rooted**, sandyblonde rooted,
 lightchampagne rooted, salt/pepper mix, snow mix, silver rooted



TEMPO 100 DELUXE ★★★★★★
 TEMPO LARGE DELUXE ★★★★★★



TEMPO LARGE DELUXE COLOURS:

espresso mix, chocolate mix, mocca mix,
 sand mix, sandyblonde mix, **snow mix**



TEMPO 100 DELUXE COLOURS:

espresso mix, darkchocolate mix, coffeebrown mix,
 chocolate mix, hotmocca mix, sand mix, sandyblonde mix,
 champagne mix, salt/pepper mix, pearl mix,
snow mix, white mix



ELITE ★★★

ELITE SMALL ★★★

ELITE COLOURS:

espresso mix, darkchocolate mix, chocolate rooted,
 hotchocolate mix, hazelnut mix, mocca mix,
 darksand mix, sand mix, champagne mix,
 lightchampagne mix, **ginger rooted**,
 smoke rooted, pearl rooted, silver mix



ELITE SMALL COLOURS:

espresso mix, chocolate mix, mocca mix, darksand mix,
 sand mix, champagne mix





The Power of Taste

Ohne Geschmack kein Stil. Geschmack verändert sich mit dem Zeitgeist. Mal ist dezente Eleganz, mal der mutige Tabubruch in Mode. Eine schöne Frisur wird jedoch immer ein Zeichen für guten Stil sein. Vertrauen Sie der Macht Ihres Geschmacks!

No style without a sense of taste. Taste is subject to the zeitgeist. At some times subtle elegance at other times the courageous breach of taboo is in fashion. A beautiful haircut will always be an expression of good style. Be confident in the power of your taste!

Sans goût, pas de style. Le goût évolue en fonction de l'air du temps. A certains moments, l'élégance classique est à la mode, à d'autres on brise les tabous et on ose beaucoup plus. Cependant, une belle coiffure restera toujours un signe de bon goût. Faites confiance au pouvoir de votre goût !

Se non c'è gusto non può esserci stile. Il gusto va modificandosi con il tempo. A volte è eleganza discreta, altre volte è la violazione di un tabù nella moda. Una bella pettinatura sarà sempre comunque un segno di alto stile. Confidi nel potere del Suo gusto!

Sin gusto no hay estilo. El gusto cambia con el espíritu de los tiempos. A veces la elegancia es sutil, a veces se rompe el tabú de la moda atrevidamente. Sin embargo, un hermoso peinado siempre será un signo de buen estilo. ¡Confíe en el poder de su gusto!

Для стиля необходим вкус. Но вкусы меняются с духом времени. Иногда тонкая элегантность, иногда смелый прорыв табу в моде. Тем не менее, красивая причёска всегда будет признаком хорошего стиля. Доверяйте своему вкусу!





RICH MONO ★★★★★



RICH MONO COLOURS:

espresso mix, darkchocolate mix, chocolate mix,
hothazelnut mix, tobacco rooted, darksand rooted,
lightcaramel rooted, lightchampagne rooted,
platinblonde mix, hotchilli mix,
pearlblonde rooted, darksnow mix





ALEXIS DELUXE ★★★★★



ALEXIS DELUXE COLOURS:
espresso mix, darkchocolate mix,
chocolate mix, bernstein mix, sand mix,
champagne mix, **smoke mix**, snow mix



SHINE COMFORT ★★★★★



SHINE COMFORT COLOURS:
espresso mix, chocolate mix,
nougat rooted, **sand mix**, caramel mix,
lighthoney rooted, champagne mix

CITY ★
CITY LARGE ★



CITY COLOURS:

black, espresso mix, chocolate mix, hazelnut mix,
bernstein mix, sandmulti mix, darksand mix, sand mix,
lightcaramel mix, champagne mix, auburn mix,
salt/pepper mix, **snow mix**



CITY LARGE COLOURS:

espresso mix, chocolate mix, hazelnut mix, bernstein mix,
darksand mix, champagne mix



DAILY ★★★
DAILY LARGE ★★★

DAILY COLOURS:

espresso mix, chocolate mix, hazelnut mix, mocca rooted,
bernstein rooted, sandmulti mix, sand mix,
champagne rooted, darkauburn mix, salt/pepper mix,
smoke mix, snow mix



DAILY LARGE COLOURS:

espresso mix, chocolate mix, hazelnut mix, mocca rooted,
bernstein rooted, sand mix, **champagne rooted**,
darkauburn mix, salt/pepper mix,
smoke mix, snow mix

APART MONO ★★★★★

APART MONO COLOURS:

chocolate mix, mocca rooted, sandmulti mix,
darksand mix, sand mix, sandyblonde mix,
salt/pepper mix, darksmoke mix, smoke mix,
pearl mix, **darksnow mix**, snow mix, white mix



CORA ★★



CORA COLOURS:

espresso mix, **chocolate rooted**, hazelnut rooted,
mocca rooted, bernstein rooted, sand rooted,
lightcaramel rooted, lightchampagne rooted,
auburn rooted, smoke rooted,
pearl rooted, snow mix



The Power of Class

Klasse ist keine Frage der Herkunft, sondern ein Ausdruck der Persönlichkeit. Klasse kann sich im eleganten Äußeren oder in positiven Charaktereigenschaften widerspiegeln. Wir achten bei unseren Modellen darauf, dass sowohl die inneren Werte als auch der äußere Look stets erstklassig sind. Entscheiden Sie sich für Klasse!

Class is no matter of background but a manifestation of personality. Class can express itself in an elegant outward appearance or in a noble character. We make sure that both the inner values and the visible looks of our models are constantly first class. Choose excellence! Commit yourself to the power of class!

La classe n'a rien à voir avec l'origine sociale, mais exprime surtout la personnalité. La classe se reflète dans l'élégance ou dans les traits de caractère positifs. Nous apportons une attention toute particulière à ce que notre qualité de finition tant intérieure qu'extérieure reste toujours au summum. Faites le choix de la classe !

La classe non ha sede nelle origini, bensì nell'evoluzione della propria personalità. La classe si può riflettere nell'eleganza dell'aspetto o in positive qualità morali. A noi sta a cuore che i nostri modelli esprimano sia valori interiori così come look esteriore di prima categoria. Scelga la classe!

Tener clase no es una cuestión de origen, sino una expresión de personalidad. Dicha clase se puede reflejar en una apariencia elegante o en rasgos de carácter positivo. Con nuestros modelos, nos aseguramos de que tanto los valores internos como los externos sean siempre de primera categoría. ¡Decídase por tener clase!

Класс – это не вопрос происхождения, а выражение личности. Класс может отражаться в элегантном внешнем виде или в позитивных чертах характера. С нашими моделями мы стремимся к тому, чтобы внутренние ценности, а также внешний вид всегда были первоклассными. Выберите свой класс!





VERONICA ★▷



VERONICA COLOURS:
espresso mix, coffeebrown mix,
mocca rooted, sandmulti mix,
sand mix, lightcaramel mix,
champagne mix, auburn mix

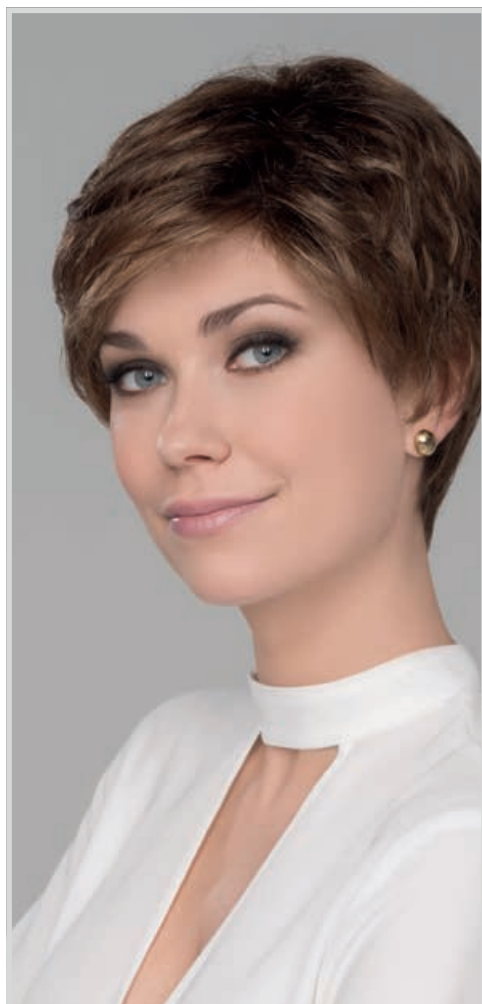


VIVA PLUS ★▷▷



VIVA PLUS COLOURS:
espresso mix, coffeebrown mix, nougat mix,
bernstein mix, **sandmulti mix**, darksand mix,
sandyblonde rooted, champagne mix, auburn mix,
smoke mix, stonegrey mix, snow mix

NOELLE MONO ★★★★★



NOELLE MONO COLOURS:

darkchocolate mix, chocolate mix, hazelnut mix,
mocca rooted, lightbernstein rooted, darksand mix,
sandyblonde rooted, champagne mix, salt/pepper mix,
smoke mix, pearl mix, snow mix

AURORA COMFORT ★★★★★SL

AURORA COMFORT COLOURS:

darkchocolate mix, coffeebrown mix, chocolate mix,
mocca mix, sandmulti mix, **darksand mix**,
lighthoney mix, sandyblonde mix, smoke mix,
darksnow mix, snow mix, white mix





NANCY ★

NANCY COLOURS:

lightespresso mix, nougat mix, mocca mix,
sandmulti mix, **sand mix**, sandyblonde mix,
champagne mix, auburn mix,
smoke mix, silver mix



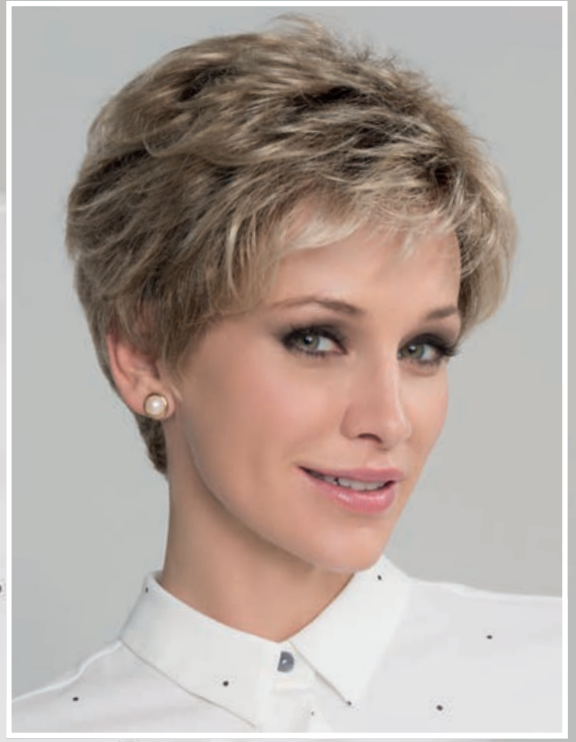
AVANTI ★

AVANTI COLOURS:

chocolate mix, **mocca mix**, sandmulti mix, darksand mix,
lightcaramel mix, lighthoney mix, sandyblonde mix, darkauburn mix



ALBA COMFORT ★★★★★

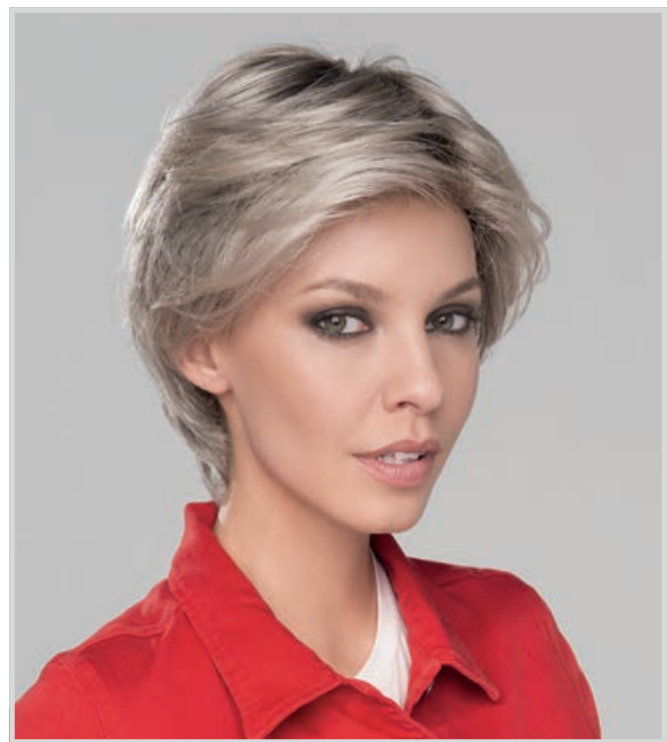


ALBA COMFORT COLOURS:
chocolate mix, nougat mix, mocca mix,
darksand rooted, sand mix, **champagne rooted**,
smoke mix, pearl mix, snow mix

CITTA MONO ★★★★★



CITTA MONO COLOURS:
espresso mix, chocolate mix, hazelnut rooted,
nougat rooted, bernstein rooted, sandmulti rooted,
sand mix, sandyblonde rooted, lightchampagne rooted,
auburn rooted, salt/pepper mix, **silver rooted**



APART HI ★▶



APART HI COLOURS:

lightespresso mix, coffeebrown mix,
darksand mix, sand mix, caramel mix,
sandyblonde mix, darksmoke mix,
smoke mix, darksnow mix, snow mix,
silver mix, white mix

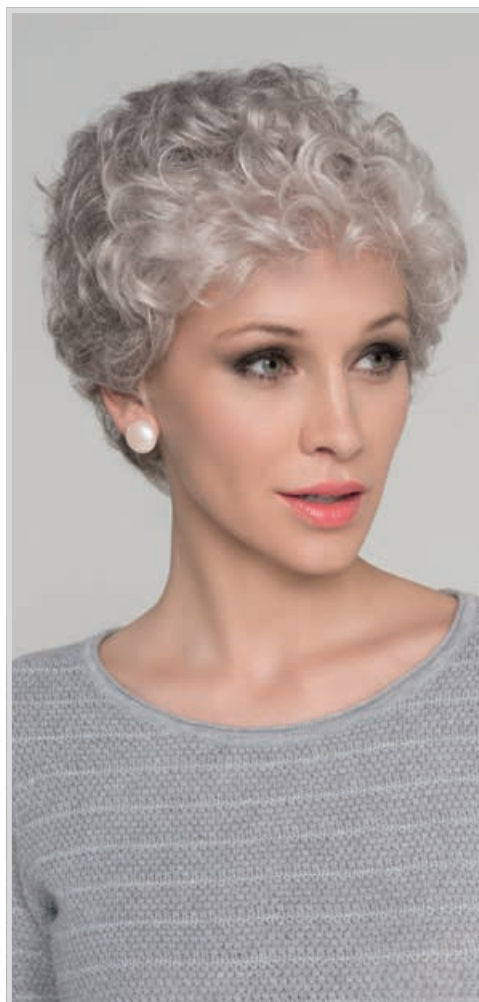
ALEXIS ★★

ALEXIS COLOURS:

lightespresso mix, chocolate mix,
nougat rooted, sandmulti mix, sand mix,
champagne mix, **auburn mix**



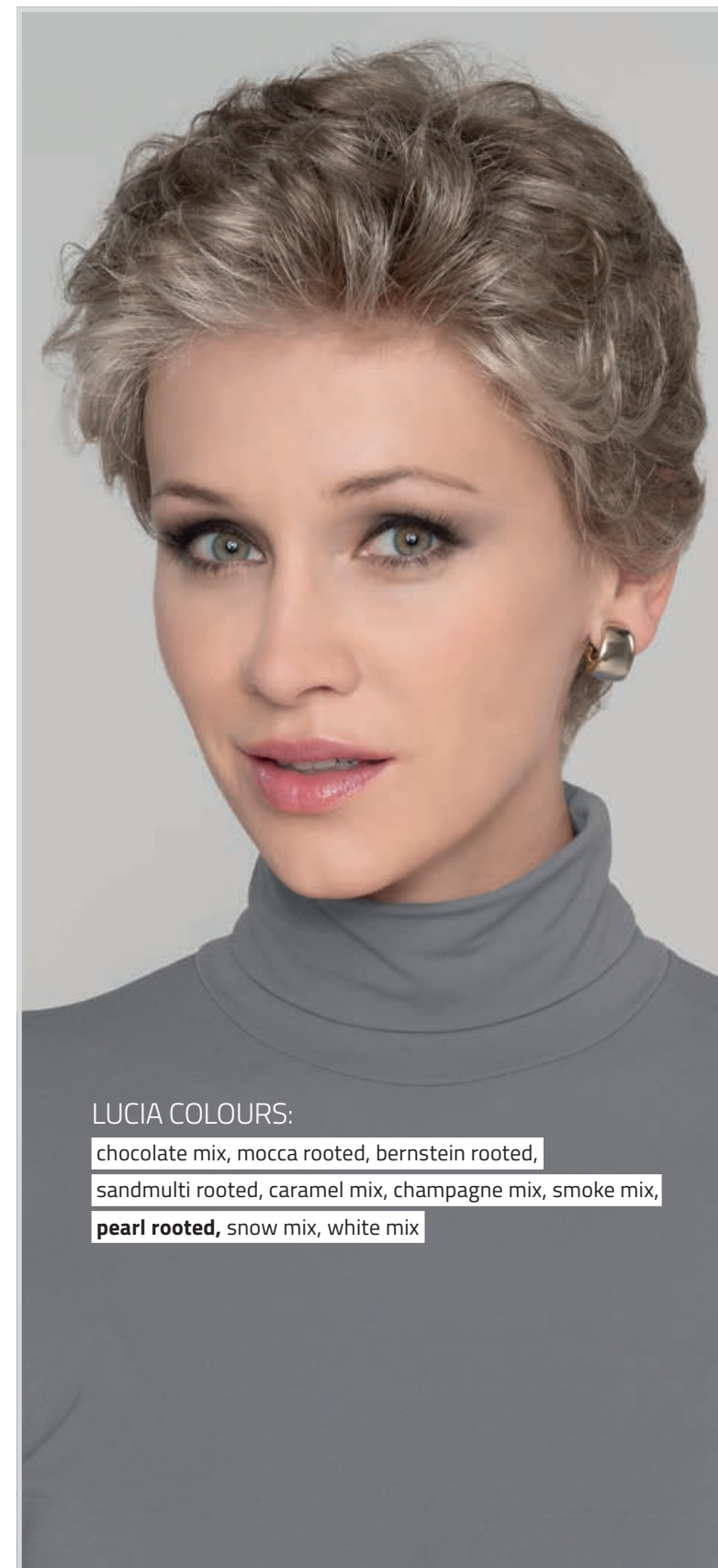
ELENORA HI COMFORT ★★★★★SL



ELENORA HI COMFORT COLOURS:

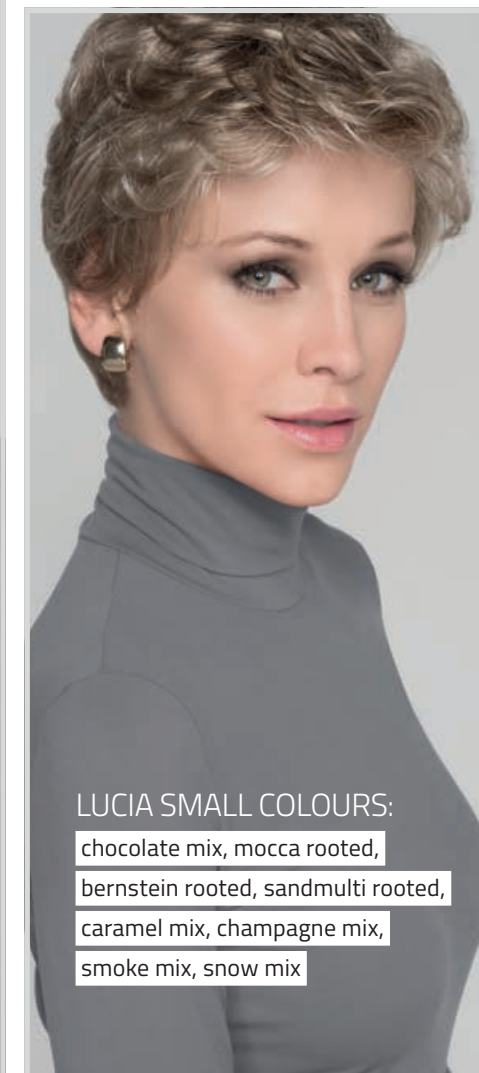
nougat rooted, sandmulti mix, sand mix,
 champagne mix, smoke mix, stonegrey mix, pearl mix,
 darksnow mix, **snow mix**, silver mix

LUCIA ★ LUCIA SMALL ★



LUCIA COLOURS:

chocolate mix, mocca rooted, bernstein rooted,
 sandmulti rooted, caramel mix, champagne mix, smoke mix,
pearl rooted, snow mix, white mix



LUCIA SMALL COLOURS:

chocolate mix, mocca rooted,
 bernstein rooted, sandmulti rooted,
 caramel mix, champagne mix,
 smoke mix, snow mix



The Power of Beauty

Wahre Schönheit kommt von innen. Es sind die Persönlichkeit und das Charisma, die die Aura eines Menschen erstrahlen lassen. Nichts unterstreicht Ihre Natur besser, als eine Frisur, die ideal zu Ihrem Typ passt. Entdecken Sie die Macht der Schönheit!

True beauty comes from within. Personality and charisma define your aura and let it sparkle and shine. Nothing emphasizes your nature better than a hairstyle that perfectly matches your character. Express yourself and discover the power of beauty!

La vraie beauté vient de l'intérieur. Ce sont la personnalité et le charisme qui permettent à une personne de rayonner. Rien ne souligne mieux votre nature qu'une coiffure correspondant parfaitement à votre type. Découvrez le pouvoir de la beauté !

La vera bellezza viene da dentro. Sono la personalità e il carisma di una persona che fanno brillare la sua aura. Niente può far risaltare la sua natura meglio di una pettinatura che rispecchi il suo modo di essere. Scopri il potere della bellezza!

La verdadera belleza viene desde adentro. Es la personalidad y el carisma que hacen brillar el aura de una persona. Nada subraya su naturaleza mejor que un peinado que se adapte perfectamente a su estilo. ¡Descubra el poder de la belleza!

Истинная красота исходит изнутри. Именно личность и харизма человека определяют сияние его ауры. Ничто не подчеркивает вашу природу лучше, чем причёска, которая идеально подходит для вашего типа. Откройте для себя силу красоты!



GINA MONO ★★★★★



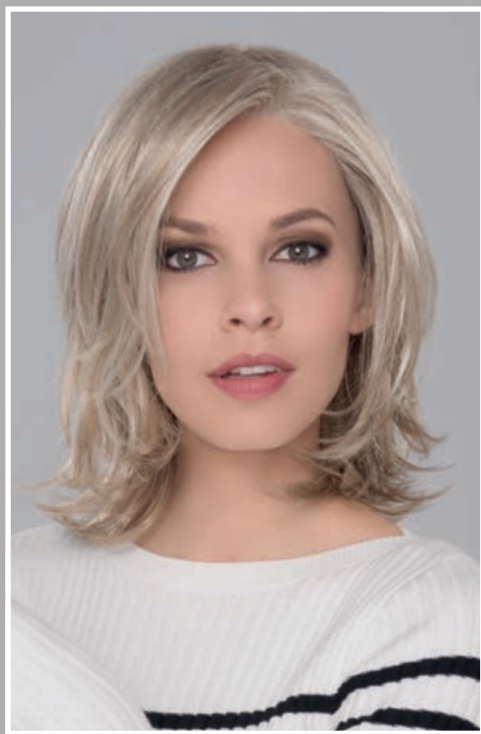
GINA MONO COLOURS:
espresso mix, chocolate mix,
hazelnut mix, bernstein mix, sand mix,
champagne mix, auburn mix

FLAIR MONO ★★★★★



FLAIR MONO COLOURS:
espresso mix, darkchocolate mix, chocolate mix,
hotmocca rooted, bernstein rooted, darksand mix,
caramel rooted, sandyblonde rooted, lightchampagne mix,
cinnamon mix, smoke mix, snow mix, silver mix

TALENT MONO ★★★★★

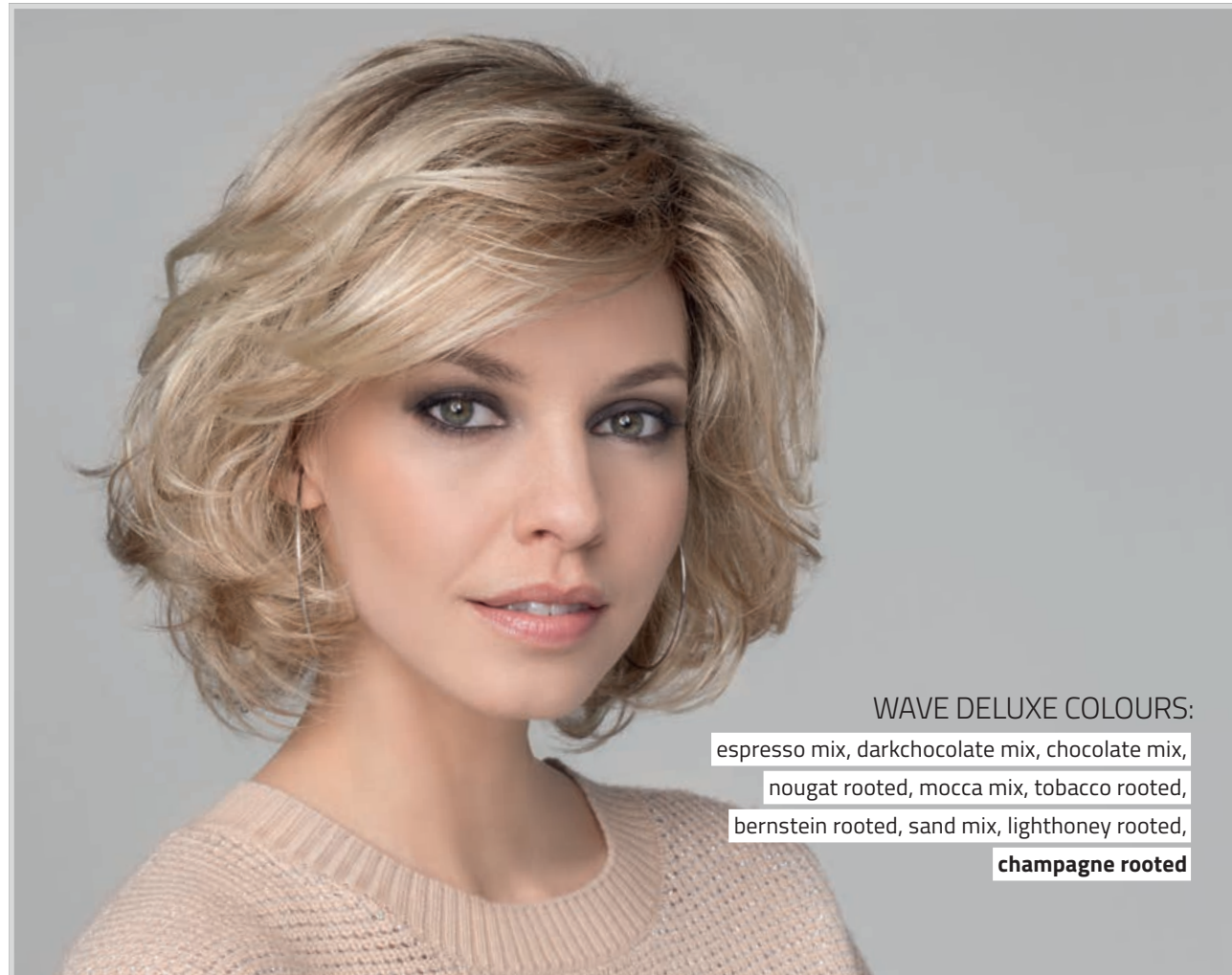


TALENT MONO COLOURS:

espresso mix, darkchocolate mix,
chocolate mix, tobacco rooted, caramel rooted,
sandyblonde rooted, **lightchampagne mix**,
hotchilli rooted, safranred mix



WAVE DELUXE ★★★★★★



WAVE DELUXE COLOURS:
espresso mix, darkchocolate mix, chocolate mix,
nougat rooted, mocca mix, tobacco rooted,
bernstein rooted, sand mix, lighthoney rooted,
champagne rooted



GRACE ★★★



GRACE COLOURS:
espresso mix, darkchocolate mix, chocolate mix, hotmocca mix,
lightbernstein rooted, champagne rooted, auburn rooted,
ginger rooted, **salt/pepper rooted**, snow mix

JADE ★★★



JADE COLOURS:

espresso mix, darkchocolate mix,
chocolate mix, **lightbernstein rooted**, sand mix,
caramel rooted, sandyblonde rooted,
champagne mix, auburn mix



CAT ★★★



CAT COLOURS:

espresso mix, darkchocolate mix, tobacco mix, **lightbernstein rooted**,
sand mix, lighthoney mix, champagne rooted,
cognac rooted, darkauburn mix





GIRL
MONO ★★★★★



GIRL MONO COLOURS:

- espresso rooted, darkchocolate rooted, chocolate rooted,
- hothazelnut mix, **lightberstein rooted,**
- caramel rooted, sandyblonde rooted, champagne rooted,
- auburn rooted, safranred rooted



CASINO MORE ★★★▶



CASINO MORE COLOURS:

black, espresso mix, chocolate mix, cinnamon rooted, tobacco rooted, bernstein rooted, sandyblonde rooted, champagne mix, **flame rooted**, cinnamon rooted, safranred rooted, cognac mix



LUCKY HI ★★★▶



LUCKY HI COLOURS:

black, espresso mix, chocolate mix, cinnamonbrown rooted, mocca mix, bernstein rooted, sand rooted, lighthoney rooted, **sandyblonde rooted**, lightchampagne rooted, salt/pepper mix, silverblonde rooted





The Power of Elegance

Eleganz ist mehr als modischer Geschmack. Es ist die Kombination aus Kultur und Klasse. Eleganz kommt ohne Schnörkel aus. Eleganz bedeutet, dass Ihr Äußeres Ihr Wesen widerspiegelt. Finden Sie die Frisur, die zu Ihnen passt und spüren Sie die Kraft der Eleganz!

Elegance is more than a fashionable style. It is the combination of culture and class. Elegance without flourish. True elegance signifies your outer appearance and reflects your nature. Find the hairstyle that suits you and feel the power of elegance!

L'élégance, c'est plus que le goût de la mode. C'est un mélange de culture et de classe. L'élégance sans fioriture. L'élégance signifie que votre apparence reflète votre personnalité. Trouvez le modèle qui vous correspond le mieux et ressentez le pouvoir de l'élégance !

L'eleganza è più che puro e semplice gusto per la moda. È la combinazione tra cultura e classe. L'eleganza non ha bisogno di fronzoli. Eleganza vuol dire che il Suo aspetto esteriore rispecchia quello interiore. Trovi la pettinatura che si adatta perfettamente a Lei e scopra il potere dell'eleganza!

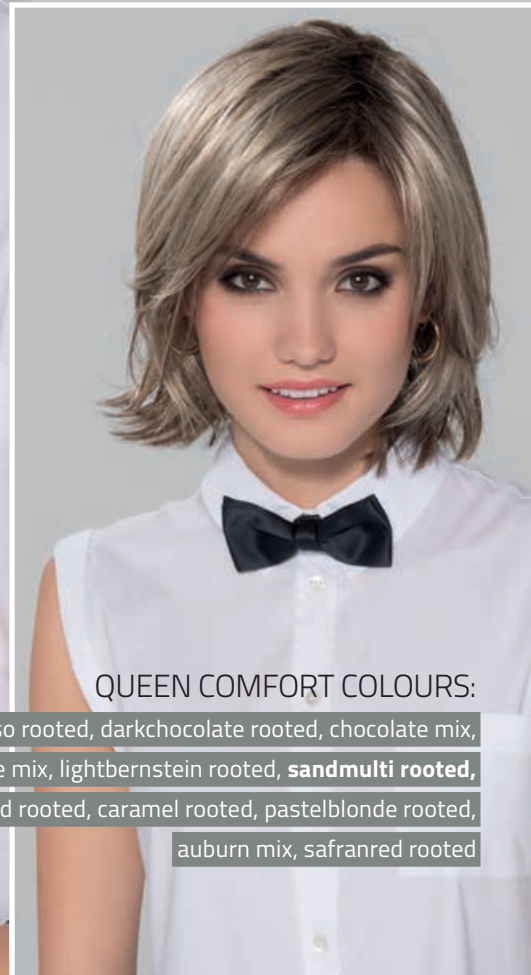
La elegancia es más que un gusto de moda. Es la combinación de cultura y de clase. La elegancia viene sin florituras. Elegancia significa que su apariencia refleja su esencia. ¡Encuentre el peinado que más le guste y sienta el poder de la elegancia!

Элегантность – это не просто хороший вкус. Это сочетание культуры и класса. Элегантность обходится без излишеств. Элегантность означает, что ваша внешность отражает вашу сущность. Найдите причёску, которая вам подходит и почувствует силу элегантности!





QUEEN COMFORT ★★★★★



QUEEN COMFORT COLOURS:
espresso rooted, darkchocolate rooted, chocolate mix,
hotchocolate mix, lightbernstein rooted, **sandmulti rooted,**
sand rooted, caramel rooted, pastelblonde rooted,
auburn mix, safranred rooted



PLANET HI **



PLANET HI COLOURS:

espresso mix, chocolate mix, hazelnut mix,
bernstein rooted, **darksand mix**, champagne rooted,
darkauburn mix, ginger rooted



PAM HI TEC ***



PAM HI TEC COLOURS:

black, espresso mix, chocolate mix, hotchocolate mix,
hotmocca mix, **bernstein rooted**, sandyblonde rooted,
champagne rooted, darkauburn mix



BEACH MONO ★★★



BEACH MONO COLOURS:

espresso rooted, chocolate rooted, cinnamonbrown mix,
hotmocca rooted, lightbernstein rooted, **pastelblonde rooted,**
cognac rooted, pearblonde rooted

STORYVILLE ★



STORYVILLE COLOURS:

espresso mix, darkchocolate mix, chocolate rooted,
hotmocca rooted, bernstein rooted, sandyblonde rooted,
champagne rooted, gingerblonde rooted

JAMILA PLUS [★]



JAMILA PLUS COLOURS:

black, espresso mix, chocolate rooted, hotmocca rooted,
bernstein rooted, lighthoney rooted, champagne rooted,
auburn rooted, ginger rooted





LIMIT ★★★

LIMIT COLOURS:
espresso mix, hotchocolate mix, hazelnut mix, nougat rooted,
hotmocca rooted, **bernstein rooted**, lightbernstein rooted,
sandmulti rooted, caramel rooted, lightchampagne rooted, auburn rooted



OCEAN ★★★

OCEAN COLOURS:
espresso mix, darkchocolate mix, chocolate rooted,
hotmocca rooted, bernstein rooted, **sandyblonde rooted**,
champagne rooted, auburn rooted

MEGA MONO ★★★★★



MEGA MONO COLOURS:

espresso mix, darkchocolate mix, chocolate mix,
hotmocca mix, tobacco rooted, sand mix,
sandyblonde mix, champagne mix,
auburn mix, safranred rooted, **ginger mix**



FLASH MONO ★★★★★

FLASH MONO COLOURS:

espresso mix, darkchocolate mix, chocolate mix,
hazelnut mix, mocca rooted, bernstein rooted,
lightcaramel mix, champagne rooted, hotchilli rooted,
safranred rooted





The Power of Mystery

Nichts ist verlockender als ein Mysterium. Je größer das Geheimnis, desto größer das Verlangen, es zu lüften. Hinter der Verschleierung liegt ein besonderer Reiz. Auch wir geben nicht all unsere Geheimnisse einfach preis. Entschlüsseln Sie die Macht des Rätselhaften!

Nothing is more tempting than a mystery. The greater a secret the stronger the desire to lift it. Every disguise covers a special allure. We as well do not reveal our secrets easily. Decipher the power of mystery!

Rien n'est plus attirant que le mystère. Plus grand est le secret, plus on a envie d'en savoir plus. Rien n'est plus attrayant que ce qui est caché. Nous ne révélons pas non plus tous nos secrets. Décodez le pouvoir des énigmes !

Niente è più attraente del mistero. Più grande è il segreto, maggiore è il desiderio di svelarlo. Dietro l'occulto si cela un particolare fascino. Anche noi non sveliamo così facilmente tutti i nostri segreti. Trovi la chiave per interpretare il potere dell'enigma!

Nada es más tentador que un misterio. Cuanto mayor es el misterio, mayor es el deseo de revelarlo. Detrás de lo misterioso, hay un encanto especial. Tampoco divulgamos todos nuestros secretos. ¡Descifre el poder de lo enigmático!

Что может быть соблазнительнее тайны? Чем больше тайна, тем сильнее желание ее раскрыть. За этой завесой скрывается особый шарм. И мы тоже не раскрываем все наши секреты. Расшифруйте силу загадочного!



CODE
MONO ★★★▶



CODE MONO COLOURS:

espresso mix, darkchocolate mix, **hotchocolate mix**,
hotmocca rooted, lightbernstein rooted,
sand mix, sandyblonde rooted,
lightchampagne rooted, hotflame mix



GLAMOUR MONO ★★★▶▶



GLAMOUR MONO COLOURS:

black, espresso mix, darkchocolate mix,
chocolate rooted, lightbernstein rooted, darksand rooted,
lighthoney rooted, champagne mix



PRETTY **



PRETTY COLOURS:

espresso mix, darkchocolate mix, **chocolate rooted**,
hotmocca rooted, bernstein rooted,
lighthoney rooted, champagne rooted



MILEY SMALL MONO ★★★



MILEY SMALL MONO COLOURS:

lightespresso mix, chocolate mix, **nougat mix**, sand mix,
lightcaramel mix, champagne mix

MARUSHA MONO ★★★★★



MARUSHA MONO COLOURS:

black, espresso mix, darkchocolate mix,
chocolate mix, **nougat mix**, sand lighted,
lighthoney mix, champagne mix, darkauburn mix

NAOMI **



NAOMI COLOURS:

black, espresso mix, nougat rooted, champagne mix,
iceblonde mix, hotflame mix, mangored rooted





CHER ^{★★} FUTURA

CHER FUTURA COLOURS:

espresso mix, darkchocolate mix, mocca rooted,
lightbernstein rooted, sandyblonde rooted, **champagne mix**,
pastelblonde rooted, aubergine mix



VOGUE ^{★★D}



VOGUE COLOURS:

black, espresso mix, chocolate mix, toffee2tone,
bernstein rooted, sand2tone, lighthoney rooted,
champagne rooted, **auburn mix**



GLOW ★★D



GLOW COLOURS:

espresso mix, darkchocolate mix, chocolate mix,
lightmocca mix, lightbernstein rooted,
lighthoney rooted, **champagne rooted**, hotchilli mix,
mangored rooted





LOLA
MORE ★★★▶



LOLA MORE COLOURS:
black, espresso mix, chocolate mix,
sandyblonde rooted, champagne mix,
darkauburn rooted, hotcognac mix



FROM EXPERTS WITH LOVE – THE HAIR CARE LINE BY ELLEN WILLE

Styling und Pflege direkt vom Experten. Die Care-Produkte von ellen wille sind perfekt auf die Anforderungen unserer hochwertigen Perücken abgestimmt. Ideal zum Frisieren. Optimal für langanhaltenden Glanz und Geschmeidigkeit.

Styling and care directly from the experts. The hair care products by ellen wille perfectly match the demands of our high-quality wigs. Ideal to dress up the hair. Optimal for long-lasting glance and silky smoothness.

Styling et soins développés par nos experts. La ligne de produits de soin est parfaitement adaptée aux exigences de nos perruques haut de gamme. Idéal pour le coiffage. Optimum pour l'effet soyeux et éclatant de votre chevelure.

Stile e cura con i consigli degli esperti. I prodotti di ellen wille per la manutenzione sono creati appositamente per le esigenze delle nostre pregiate parrucche. Perfetti per creare l'acconciatura desiderata. Ottimi per una lucentezza e setosità che durino nel tempo.

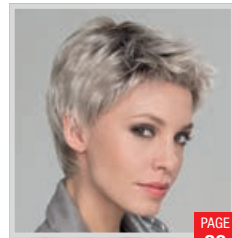
Estilo y cuidado desarrollados directamente por los expertos. Los productos para el cuidado de ellen wille se adaptan perfectamente a los requisitos de nuestras pelucas de alta calidad. Ideal para estilizar, para lograr un brillo y suavidad duraderos.

Профессиональные средства для укладки и ухода от экспертов. Продукты линии Expert-Care от ellen wille идеально соответствуют требованиям наших высококачественных париков. Превосходно подходят для укладки. Оптимально для долговременного блеска и эластичности.



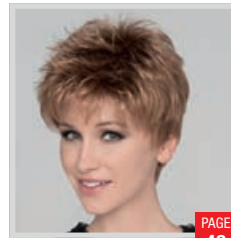
POWER STYLES

SHORT & SPORTY



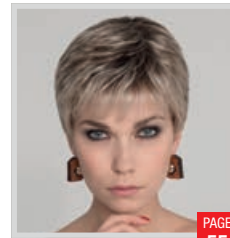
Risk
★★

PAGE 28



Golf
★

PAGE 43



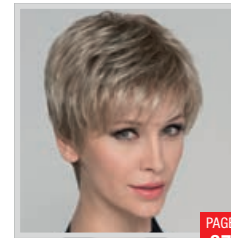
Mia Mono
★★★★

PAGE 55



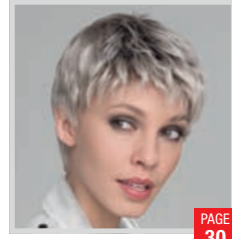
Alba Comfort
★★★★★

PAGE 100



Carol Mono
★★★★★

PAGE 37



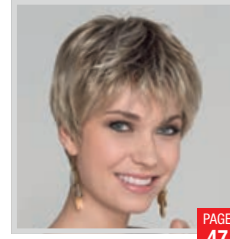
Risk Sensitive
★★

PAGE 30



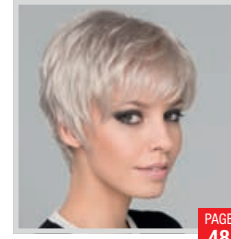
Ginger Mono
★★★★

PAGE 33



Bo Mono
★★★★

PAGE 47



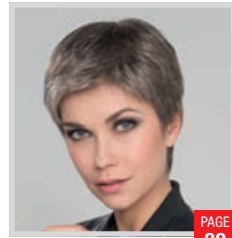
Light Mono
★★★

PAGE 48



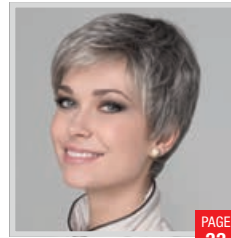
Carol
★★

PAGE 37



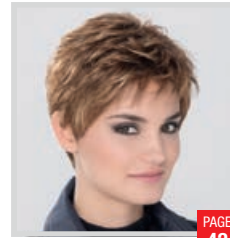
Risk Comfort
★★★★★

PAGE 29



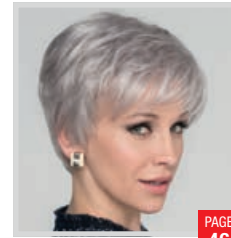
Ginger Large Mono
★★★★★

PAGE 33



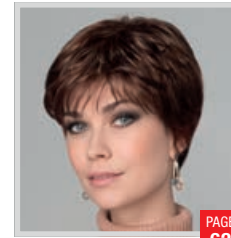
Jolly
★★

PAGE 42



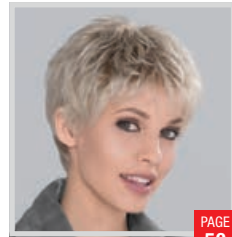
Cara 100 Deluxe
★★★★★

PAGE 46



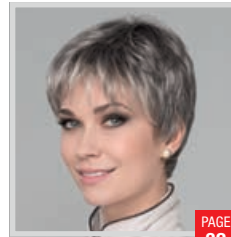
Gold
★★

PAGE 62



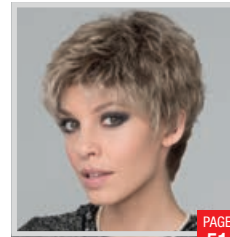
Run Mono
★★★★★

PAGE 50



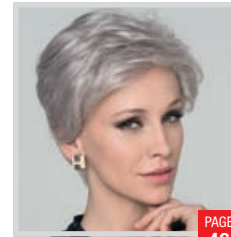
Ginger
★★

PAGE 32



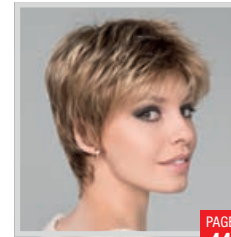
Foxy
★★

PAGE 51



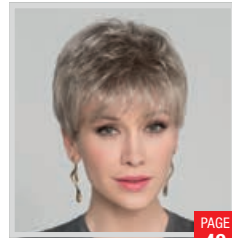
Cara Small Deluxe
★★★★★

PAGE 46



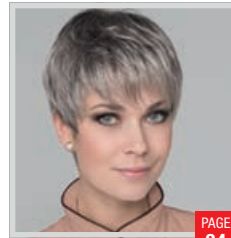
Fair Mono
★★★★

PAGE 44



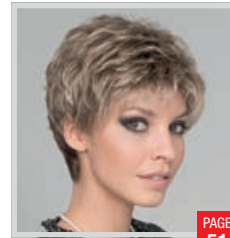
Only Mono
★★★★

PAGE 49



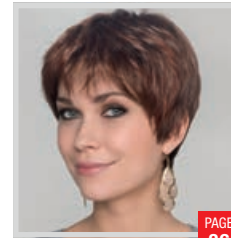
Ginger Small
★★

PAGE 34



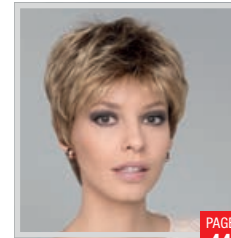
Foxy Small
★★

PAGE 51



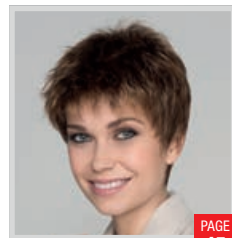
Zizi Mono
★★★

PAGE 36



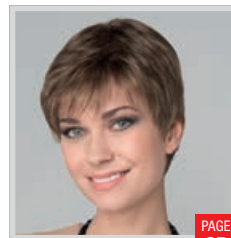
Fair
★★

PAGE 44



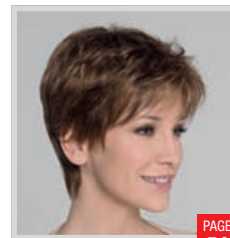
Flex
★

PAGE 45



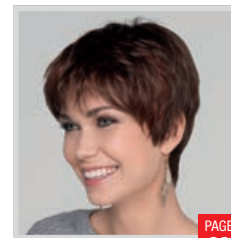
Liza Small Deluxe
★★★★★

PAGE 35



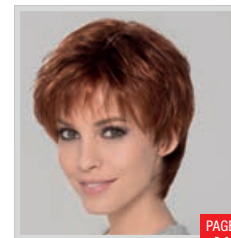
Take
★★

PAGE 54



Zizi
★★

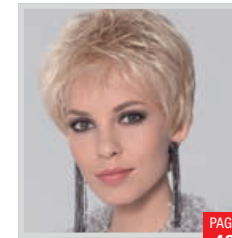
PAGE 36



Ivy
★★

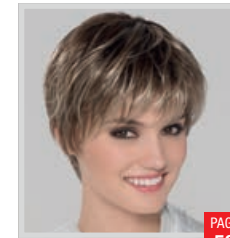
PAGE 41

FRESH & TRENDY



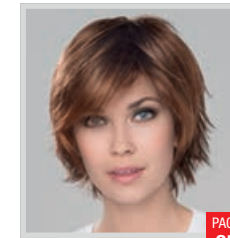
Coco
★★

PAGE 40



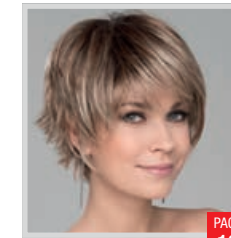
Smart Mono
★★★★

PAGE 59



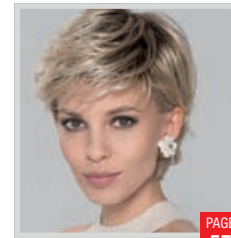
Clever
★★

PAGE 25



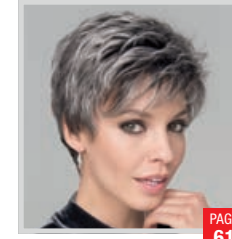
Sky
★★

PAGE 19



Score
★★

PAGE 57



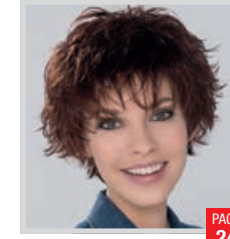
Spring Hi
★★

PAGE 61



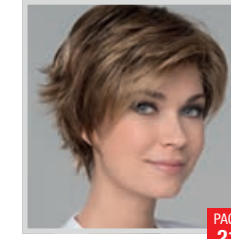
Smart Large Mono
★★★★

PAGE 59



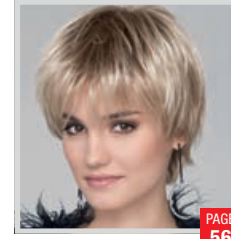
Push Up
★★

PAGE 24



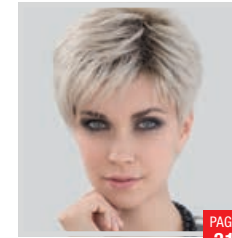
Flip Mono
★★★★

PAGE 21



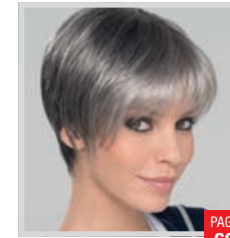
Start
★★

PAGE 56



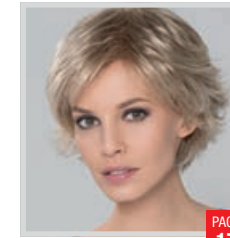
Love Comfort
★★★★★

PAGE 31



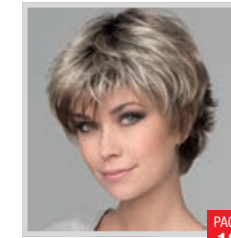
Seven Super
★★★

PAGE 69



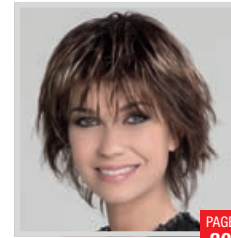
Date Mono
★★★★

PAGE 17



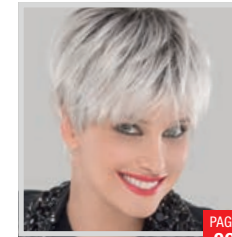
Club 10
★★

PAGE 18



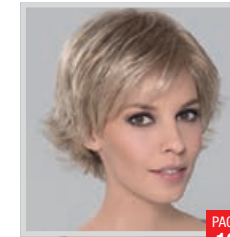
Play
★★

PAGE 20



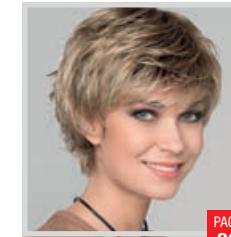
Swing
★★

PAGE 06



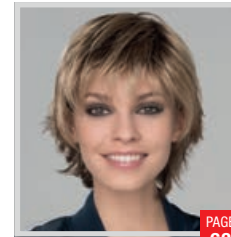
Date
★★

PAGE 16



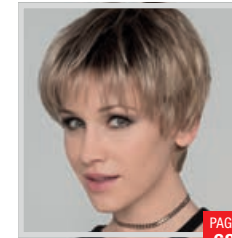
Keira
★★

PAGE 26



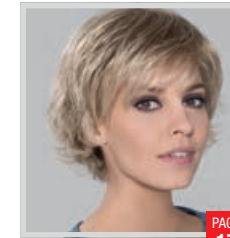
Gemma Mono
★★★★★

PAGE 63



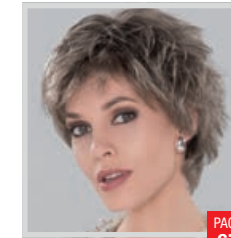
Stop Hi Tec
★★

PAGE 68



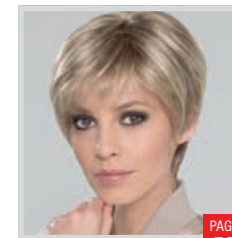
Date Large
★★

PAGE 17



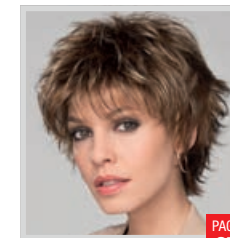
Travel Mono
★★★★

PAGE 67



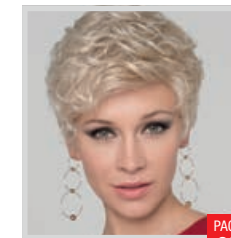
Ever Mono
★★★★★

PAGE 58



Click
★

PAGE 27



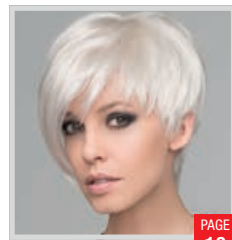
Kiss
★★

PAGE 09

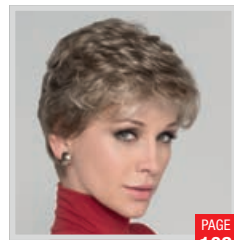


ASYMMETRIC
& STYLISH

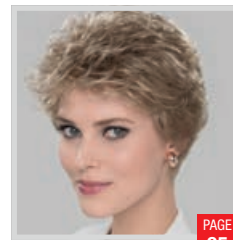
ELEGANT & CHIC



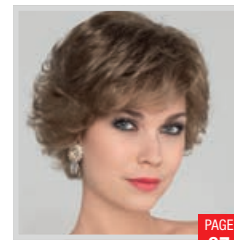
Disc
★★★



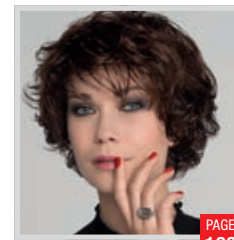
Apart Hi
★▷



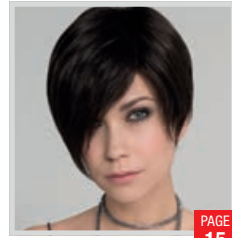
Viva Plus
★▷▷



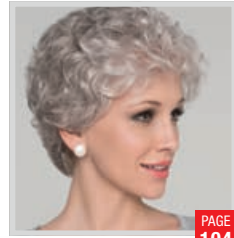
Aurora Comfort
★★★★★ SL



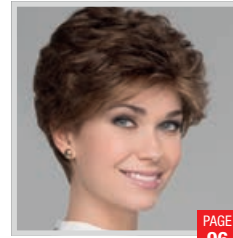
Alexis
★★



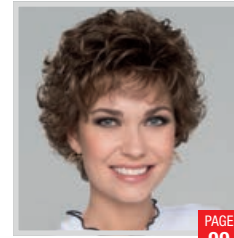
Trend Mono
★★★★▷▷



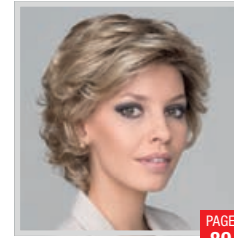
Elenora Hi Comfort
★★★★★ SL



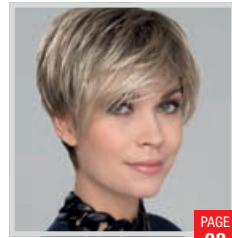
Noelle Mono
★★★★▷▷



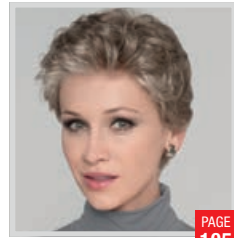
Avanti
★



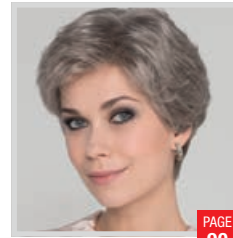
Daily
★★▷



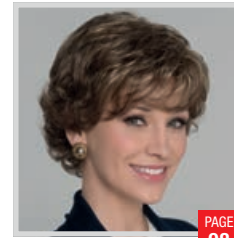
Fenja
★★★



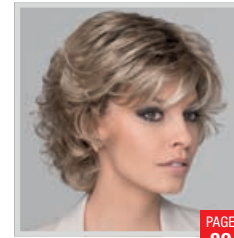
Lucia
★▷



Apart Mono
★★★★▷▷



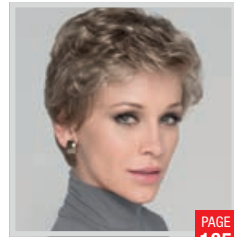
Nancy
★



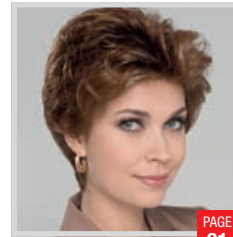
Daily Large
★★▷



Fenja Small
★★★



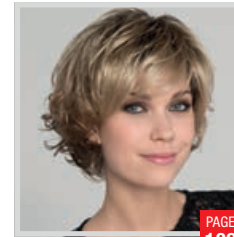
Lucia Small
★▷



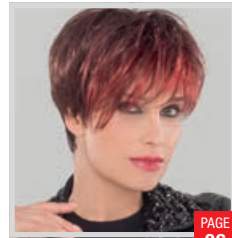
Cora
★▷▷



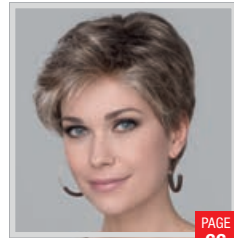
Veronica
★▷



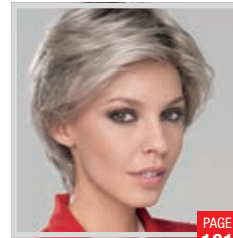
Flair Mono
★★★★▷▷



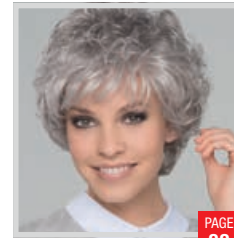
Jazz
★★▷



Solitär Hi Mono
★★★★▷



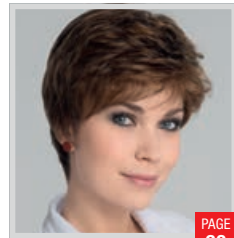
Citta Mono
★★★★▷▷



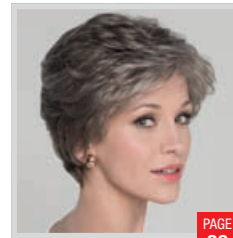
City
★▷



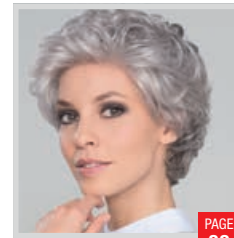
You
★



Spring Mono
★★★★▷▷



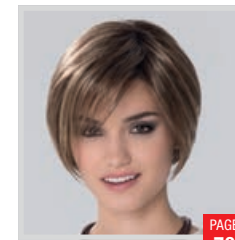
Alexis Deluxe
★★★★★▷▷



City Large
★▷

BOB & BEAUTY

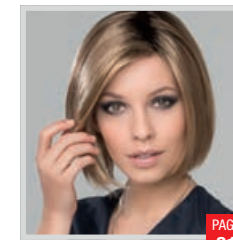
CURLS & WAVES



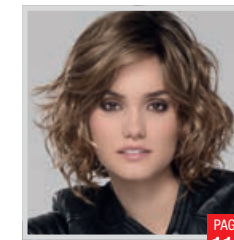
Smile Mono
★★★★▷



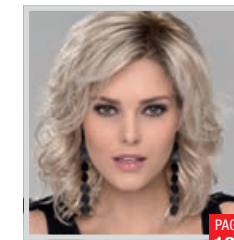
Amy Small Deluxe
★★★★★▷



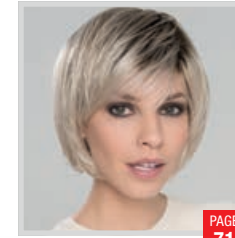
Elite
★★★★▷



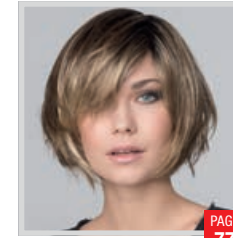
Girl Mono
★★★★▷



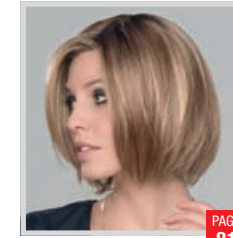
Beach Mono
★★★★▷



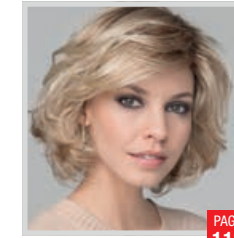
Beam
★★



Fresh
★★★★



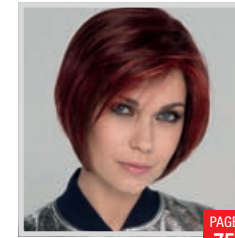
Elite Small
★★★★▷



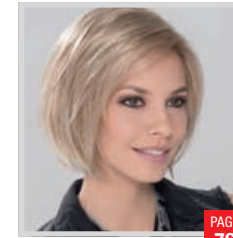
Wave Deluxe
★★★★★▷▷



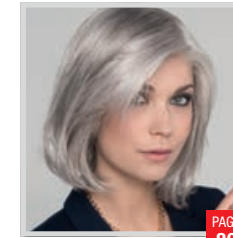
Jamila Plus
★▷



Talia Mono
★★★★▷



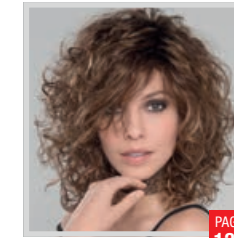
Young Mono
★★★★▷▷



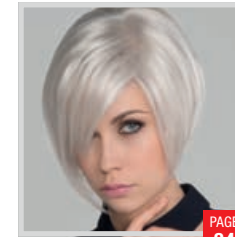
Tempo 100 Deluxe
★★★★★▷



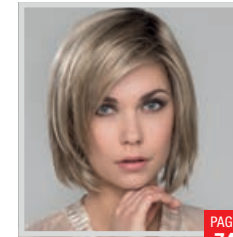
Grace
★★★★▷



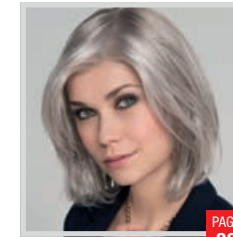
Storyville
★▷



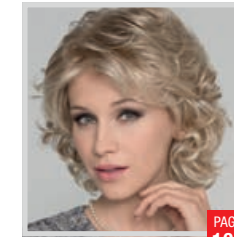
Rich Mono
★★★★▷



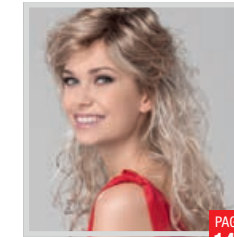
Smoke Hi Mono
★★★★▷▷



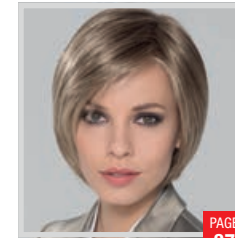
Tempo Large Deluxe
★★★★★▷



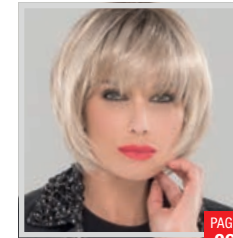
Gina Mono
★★★★▷



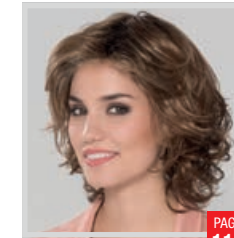
Lola More
★★★★▷



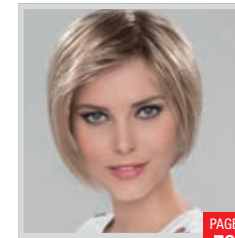
Shine Comfort
★★★★▷▷



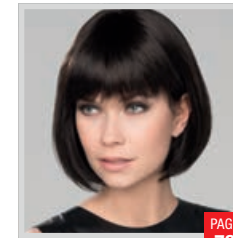
Blues
★★



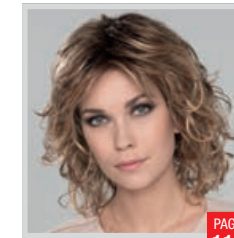
Jade
★★▷



Amy Deluxe
★★★★★▷



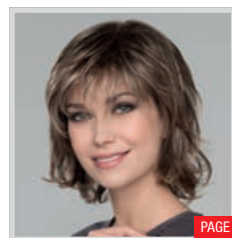
Sue Mono
★★★★



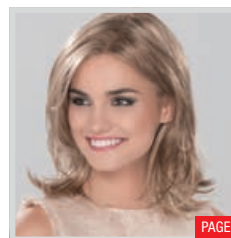
Cat
★★★★▷



LAYERED & LOVELY



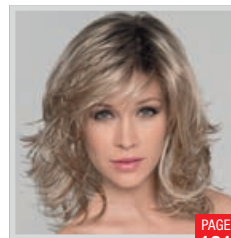
Planet Hi
★★



Flash Mono
★★★★



Queen Comfort
★★★★



Ocean
★★★



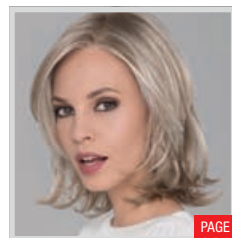
Limit
★★★



Pam Hi Tec
★★★



Lucky Hi
★★★

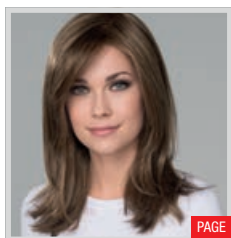


Talent Mono
★★★★



Casino More
★★★★

LONG & WILD



Miley Small Mono
★★★★



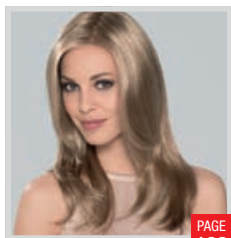
Cher Futura
★★



Marusha Mono
★★★★



Pretty
★★



Mega Mono
★★★★



Glow
★★



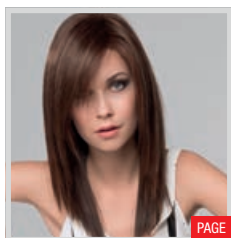
Vogue
★★



Naomi
★★



Glamour Mono
★★★★



Code Mono
★★★★

QUALITY

★★★★★

Monofilament + 100% handgeknüpft
Monofilament + 100% handmade
Monofilament + 100% fait main
Monofilamento + 100% fatta a mano
Monofilamento + 100% anudada a mano
Монофиламент + 100% ручная работа

★★★★★

100% handgeknüpft
100% handmade
100% fait main
100% fatta a mano
100% anudada a mano
100% ручная работа

★★★★

Monofilament + Tresse
Monofilament + wefted
Monofilament + tresses
Monofilamento + lavorata a macchina
Monofilamento + tejida a máquina
Монофиламент + трессы

★★★

Teil-Monofilament – Scheitel
Including mono – parting
Partie en monofilament – raie
Monofilamento parziale – riga
Con monofilamento en la parte de la raya
Частичный монофиламент на проборе

★★

Teil-Monofilament – Wirbel
Including mono – crown
Partie en monofilament – rond-point
Monofilamento parziale – vertice
Con monofilamento en la coronilla
Частичный монофиламент только на макушке

★

Tresse
Wefted
Montage machine
Annodatura a macchina
Hecho a máquina
Трессы

D

Filmansatz
Lace front
Bordure invisible
Tulle cinema
Tul frontal
Невидимая фронтальная линия

D

Mini-Filmansatz
Mini lace front
Mini bordure invisible
Mini tulle cinema
Tul frontal mini
Мини-фронтальная линия

DD

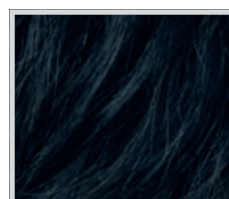
Erweiterter Filmansatz
Extended lace front
Bordure invisible extra-longue
Tulle cinema prolungato
Tul frontal alargado
Удлиненная фронтальная линия

SL

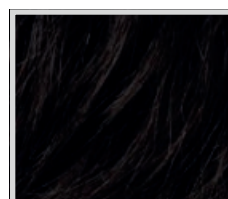
Softer Filmansatz
Soft lace front
Bordure invisible extra soyeuse
Lace front soft
Tul frontal más suave
Мягкая фронтальная линия



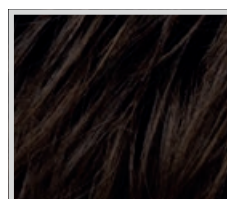
POWER COLOURS



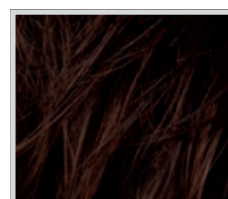
cosmoblack
1+



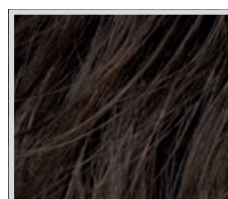
black
1.2



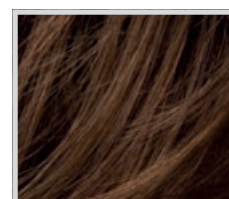
espresso
4.6.2



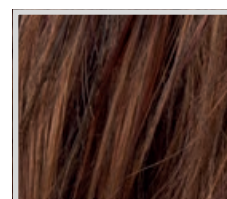
darkchocolate
6.33.4



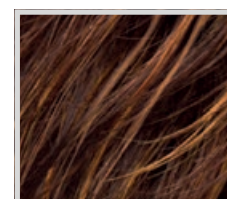
coffeebrown
8.12.6



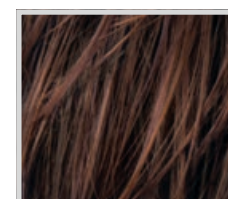
chocolate
830.6



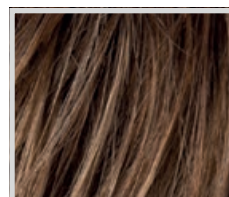
hotchocolate
33.27.6



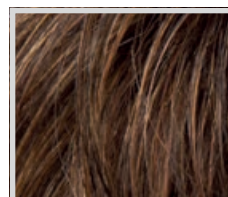
hazelnut
830.27.6



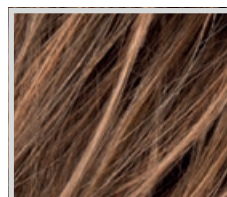
cinnamonbrown
30.33.27



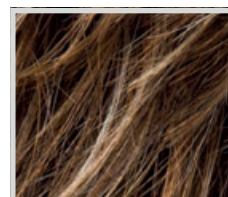
nougat
12.8.20



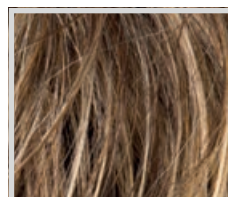
mocca
830.12.27



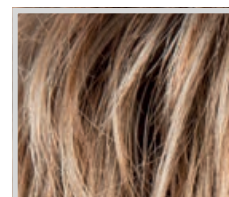
hotmocca
830.27.33



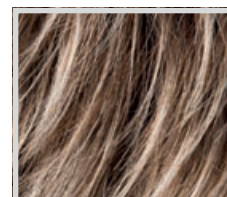
tobacco
830.26.27



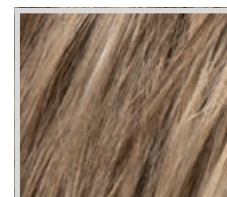
bernstein
12.26.19



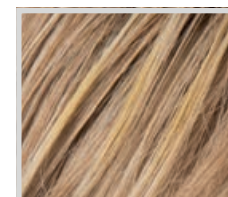
lightbernstein
12.26.27



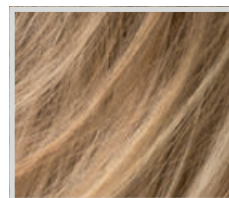
sandmulti
14.24.12



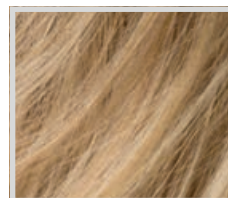
darksand
12.20.22



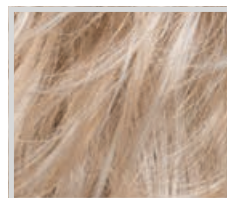
sand
14.26.20



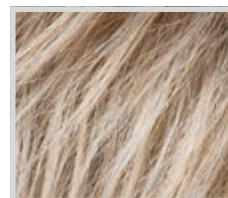
caramel
20.26.14



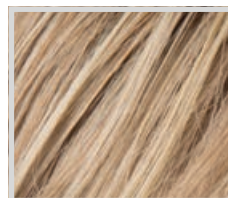
lightcaramel
26.19.20



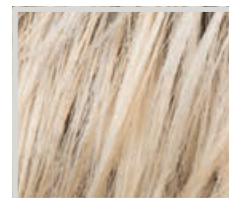
lighthoney
26.25.20



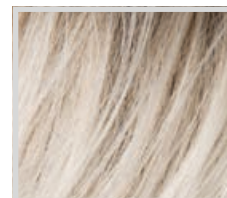
sandyblonde
16.22.14



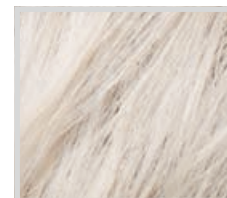
champagne
22.26.25



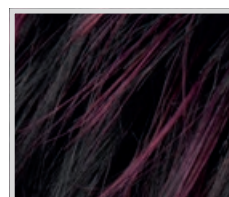
pastelblonde
25.23.26



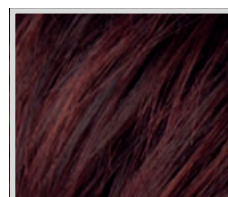
lightchampagne
23.24.25



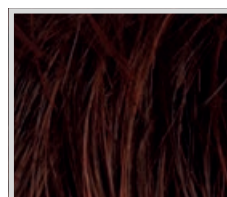
platinblonde
1001.23.60



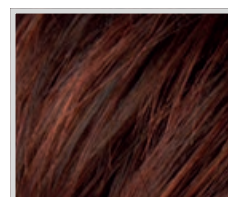
blackcherry
1.131



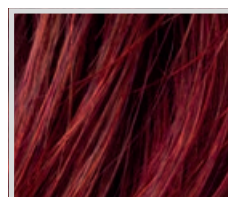
aubergine
131.133.132



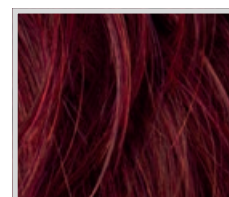
darkauburn
33.130.2



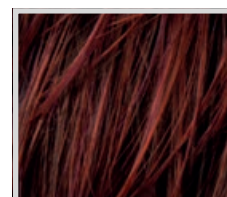
auburn
33.130.4



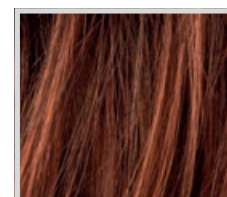
hotflame
132.133



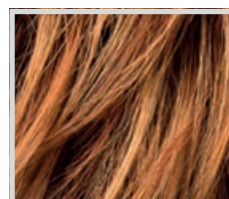
flame
133.132.33



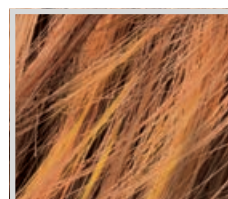
hotchilli
130.33.4



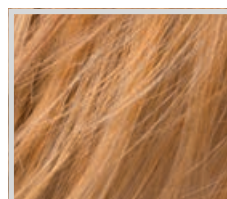
cinnamon
30.29.33



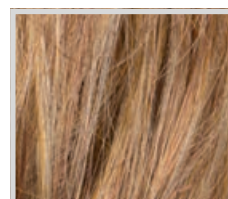
safranred
29.28.33



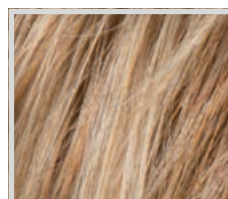
mangored
28.29.31



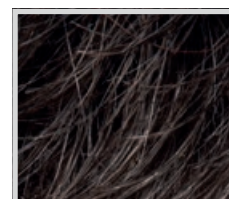
mango
28.19.31



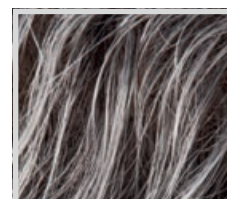
cognac
31.19.30



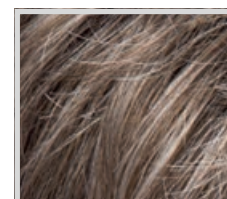
ginger
26.27.19



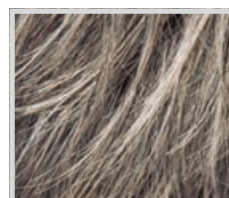
pepper
39.44



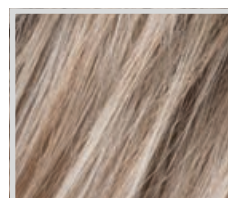
salt/pepper
39.51.44



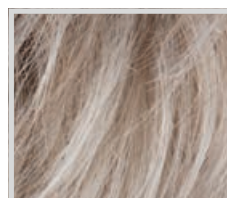
smoke
48.38.36



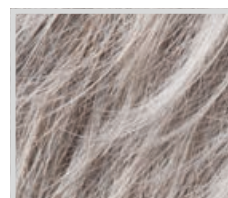
stonegrey
58.51.60



pearlblonde
101.16.14



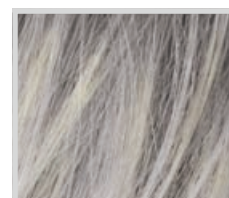
pearl
101.14



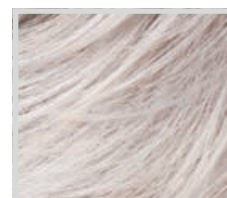
darksnow
51.60.58



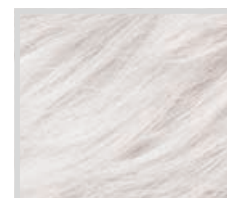
snow
60.56.58



silverblonde
60.24



silver
60.56



white
60

MIX

Modische Farbmischung und Strähnung
Fashionable colour blend and high/lowlights
Effet méché dans des coloris tendance
Miscela di tonalità diverse alla moda
Mezcla de colores y mechas de moda
Модный микс цветов и мелирование

ROOTED

Natürliche Ansatzfarbgebung
Naturally rooted colours
Effet racine dans un ton plus foncé
Effetto ricrescita: la base delle meche è scura
Raíz naturalmente más oscura
Эффект отросших корней

DARK

Dunklere Variante der abgebildeten Farbe
Darker variety of pictured colour
Variation plus foncée de la couleur
Variante più scura del colore raffigurato
Variante más oscura del color mostrado
Более темная версия изображенного цвета

LIGHT

Hellere Variante der abgebildeten Farbe
Brighter variety of pictured colour
Variation plus claire de la couleur
Variante più chiara del colore raffigurato
Versión más clara del color mostrado
Более светлая версия изображенного цвета

HOT

Intensivere Variante der Grundfarbe
More vivid variety of base colour
Variation plus intense de la couleur
Variante più accesa del colore di base
Variante más intensa del color básico
Более интенсивный вариант основного цвета