

ellen
wille
THE HAIR YOU LOVE



Top Power

BY ELLEN WILLE

Top Power

BY ELLEN WILLE



TOP DESIGN. TOP QUALITY. HAIR TOPPER!

De Top Power ist Lust am Wandel und Spaß an Schönheit. Die neue Hair Topper Collection von ellen wille eröffnet unzählige Möglichkeiten. Neue Looks im Handumdrehen, mehr Volumen im Nullkommanichts. Ganz oben in Sachen Qualität, weit vorn in puncto Style. In jeder Hinsicht einfach top. Top Power.

Es Top Power representa el deseo de cambiar y el placer de la belleza. La nueva colección Hair Topper de ellen wille abre innumerables posibilidades. Nuevos Looks en un dos por tres así como más volumen en un instante. De calidad máxima, con un estilo muy vanguardista. ¡En todos los sentidos, simplemente genial! ¡Top power!

It Top Power è voglia di cambiare e di sentirsi belle divertendosi. La nuova collezione Hair Topper di ellen wille offre innumerevoli possibilità. Nuovi look in un batter d'occhio, più volume in un istante. In cima in termini di qualità, avanti in tema di stile. Semplicemente il top sotto ogni aspetto. Top Power.

En Top Power is passion for change and pleasure in beauty. The new Hair Topper collection from ellen wille offers countless possibilities. New looks in the blink of an eye, more volume in no time at all. Superior in terms of quality, ahead in regard to style. Top in every respect. Top power.

Fr Top Power représente l'envie de changement et le plaisir de la beauté. La nouvelle collection Hair Topper d'ellen wille offre de multiples variantes. De nouveaux looks en un tour de main, plus de volume en un rien de temps. Avec le meilleur de la qualité, avec un style en avance sur son temps. Simplement toujours au top. Top power.

Ru Top Power – это желание перемен и радость красоты. Новая коллекция Hair Topper от ellen wille открывает множество возможностей. Ваш новый имидж в мгновение ока – больше объема одним движением руки. На вершине с точки зрения качества, далеко впереди с точки зрения стиля. Великолепно во всех отношениях. Top Power.



Fun

HIGH HEAT FIBER



Size: 13 x 6 cm • Length: 12 - 24 cm

espresso mix • darkchocolate mix • chocolate mix • mocca rooted •
lightbernstein rooted • **sandmulti rooted** • sandyblonde rooted •
champagne rooted • auburn rooted • pearl rooted • white mix

HI
HEAT
HIGH HEAT
FIBER

Fun



4

5



Value

REMY HUMAN HAIR



Size: 17 x 17 cm • Length: 12 - 16 cm

espresso mix • darkchocolate mix • chocolate mix • mocca mix •
lightbernstein rooted • sand mix • **sandyblonde rooted** •
champagne rooted



Value

☆☆☆☆☆)

Close

SYNTHETIC HAIR



Size: 29 x 22 cm • Length: 9 - 10 cm

chocolate mix • mocca mix • bernstein mix • darksand mix •
sand mix • champagne mix • salt/pepper mix • **smoke mix** • pearl mix • snow mix

SH
SYNTHETIC
HAIR



Close

8

9



Just

HIGH HEAT FIBER



Size: 8 x 14 cm • Length: 23 - 26 cm

espresso mix • darkchocolate mix • chocolate mix • mocca mix • bernstein rooted • sand mix • **sandyblonde rooted** • pearlblonde mix • champagne mix • silver mix

HI
HEAT
HIGH HEAT
FIBER



Just

☆☆☆☆)
Just Nature

REMY HUMAN HAIR



Size: 8 x 13 cm • Length: 26 - 28 cm

espresso mix • darkchocolate mix • chocolate mix • mocca mix •
bernstein mix • sand mix • **sandyblonde rooted** •
champagne rooted



☆☆☆☆)

Just Long

HIGH HEAT FIBER



Size: 8 x 14 cm • Length: 38 - 40 cm

espresso mix • darkchocolate mix • chocolate mix • mocca mix •
bernstein rooted • sand mix • sandyblonde rooted •
pearlblonde mix • champagne mix

HI
HEAT
HIGH HEAT
FIBER



Just Long

☆☆☆☆) **Couture**

HIGH HEAT FIBER



Size: 14 x 18 cm • Length: 28 - 30 cm

espresso mix • darkchocolate mix • chocolate rooted • mocca rooted •
lightbernstein rooted • sandyblonde rooted • pearlblonde rooted •
lightchampagne rooted • auburn rooted • salt/pepper mix • silver mix

HI
HEAT
HIGH HEAT
FIBER



☆☆☆☆☆)

Ideal

REMY HUMAN HAIR



Size: 29 x 24 cm • Length: 9 - 14 cm

espresso mix • darkchocolate mix • chocolate mix • mocca mix •
bernstein mix • sand mix • sandyblonde rooted • champagne rooted



Ideal

Famous

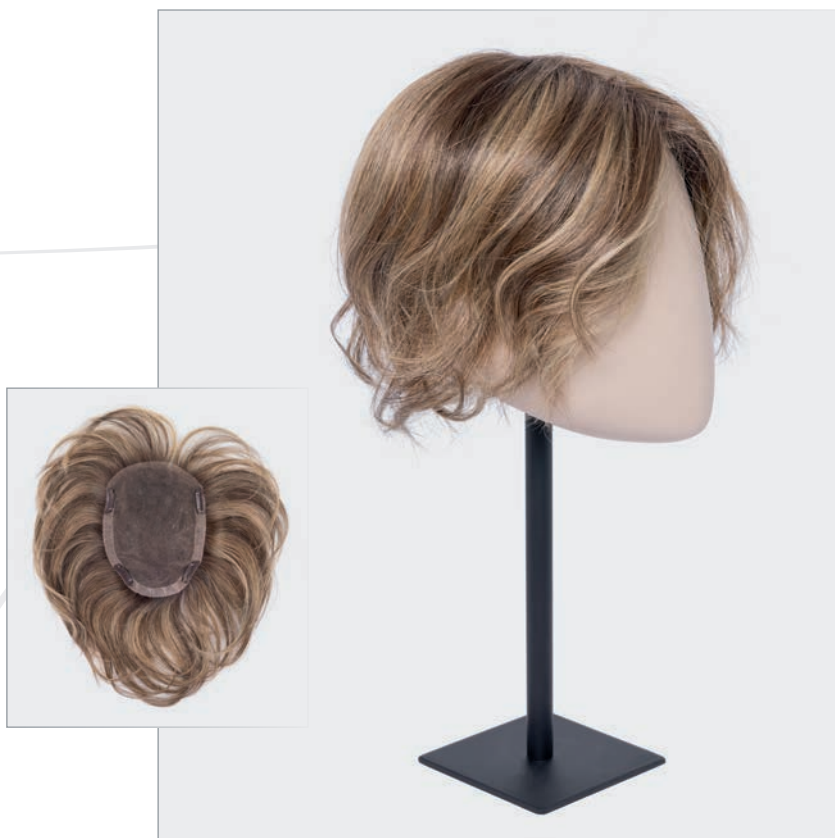
20



☆☆☆☆)

Real

PRIME HAIR



Size: 13 x 16 cm • Length: 14 - 20 cm

espresso mix • darkchocolate mix • chocolate mix •
bernstein rooted • sand mix • champagne rooted •
smoke mix • naturewhite mix

PH
PRIME
HAIR



Real



Magic

FINEST HUMAN HAIR



Size: 14 x 17 cm • Length: 20 - 23 cm

espresso mix • darkchocolate mix • chocolate mix • mocca mix •
lightbernstein rooted • **sandyblonde rooted** • champagne mix



Magic

☆☆☆☆)
Famous

REMY HUMAN HAIR



Size: 16 x 17 cm • Length: 30 – 32 cm

espresso mix • darkchocolate mix • chocolate mix • mocca mix • nougat rooted •
lightbernstein rooted • sandyblonde mix • champagne rooted



☆☆☆☆☆))

Fizz

SYNTHETIC HAIR



Size: 29 x 22 cm • Length: 17 - 25 cm

espresso mix • darkchocolate rooted • chocolate mix • mocca rooted •
lightbernstein rooted • sand rooted • sandyblonde rooted • pastelblonde rooted •
lightchampagne rooted • stonegrey rooted • silver mix

SH
SYNTHETIC
HAIR

Fizz

☆☆☆☆) **Effect**

HIGH HEAT FIBER



Size: 18 x 17 cm • Length: 18 – 29 cm

espresso mix • darkchocolate mix • chocolate mix •
mocca rooted • **bernstein rooted** • caramel mix • sandyblonde rooted •
pearlblonde rooted • auburn rooted

HI
HEAT
HIGH HEAT
FIBER

Effect

☆☆☆☆☆)

Lovely

HIGH HEAT FIBER



Size: 29 x 23 cm • Length: 12 – 23 cm

espresso mix • darkchocolate mix • chocolate rooted •
mocca rooted • lightbernstein rooted • sandmulti rooted • sandyblonde rooted •
pearlblonde rooted • **champagne rooted**

HI
HEAT
HIGH HEAT
FIBER



Lovely

☆☆☆☆)
Lace Top

SYNTHETIC HAIR



Size: 17 x 16 cm • Length: 10 - 12 cm

espresso mix • chocolate mix • nougat rooted • mocca rooted •
bernstein rooted • caramel rooted • champagne rooted •
stonegrey mix • silver mix



Face
Top



☆☆☆☆
Top Mono

SYNTHETIC HAIR



Size: 17 x 16 cm • Length: 12 - 14 cm

espresso mix • chocolate mix • bernstein mix • sand mix • caramel mix •
champagne mix • **smoke mix** • snow mix • silver mix

SH
SYNTHETIC
HAIR

Top
Mono

☆☆☆☆)

Matrix

REMY HUMAN HAIR



Size: 16 x 17 cm • Length: 32 – 36 cm

espresso mix • darkchocolate mix • chocolate mix • mocca mix • sand mix •
sandyblonde rooted • champagne rooted

HH
HUMAN
HAIR



☆☆☆☆☆))

Secret

SYNTHETIC HAIR



Size: 29 x 23 cm • Length: 28 - 32 cm

espresso mix • darkchocolate rooted • chocolate mix •
mocca mix • bernstein rooted • sandyblonde rooted • **champagne rooted** •
stonegrey rooted • silvergrey mix

SH
SYNTHETIC
HAIR

Secret

☆☆☆☆
Dream

HIGH HEAT FIBER



Size: 16 x 14 cm • Length: approx. 40 cm

espresso mix • darkchocolate mix • chocolate rooted • mocca rooted •
bernstein rooted • sand rooted • **sandyblonde rooted** • lightchampagne rooted •
salt/pepper mix • silver mix

HI
HEAT
HIGH HEAT
FIBER



Dream

☆☆☆☆)

Fill In

REMY HUMAN HAIR



Size: 8 x 13 cm • Length: 26 - 28 cm

espresso mix • darkchocolate mix • chocolate mix • mocca mix • bernstein mix •
sand mix • **sandyblonde rooted** • champagne rooted



Fill In



☆☆☆☆☆
Cometa

REMY HUMAN HAIR



Size: 13 x 16 cm • Length: 16 - 22 cm

espresso mix • **darkchocolate mix** • chocolate mix • mocca mix •
lightbernstein mix • sandyblonde mix • champagne mix



Cometa

CUSTOMIZE
YOUR

Cuts



colour: sandyblonde

50

HAIR TOPPER
Cometa
Page 49

Die Top-Power-Modelle von ellen wille sind echte Verwandlungskünstler. Sie lassen sich ganz individuell nach persönlichen Vorlieben zuschneiden. Schicke Ponys, asymmetrische Konturen oder mehr Volumen. Bieten Sie Ihren Kundinnen den idealen Stil zu deren Lifestyle!

The Top Power models from ellen wille provide true versatility. They can be individually adjusted to personal preferences. Trendy fringes, asymmetric silhouettes or more volume. Let your customers have the ideal style for their lifestyle!



Fringy Bob



Beach Waves

Flexible cuts

Experience the wide range of cuts.
Endless possibilities.

51



Funky Hair



Asymmetric Style

CUSTOMIZE YOUR Colours

Your own hair



S2



colour: silver

HAIR TOPPER
Just
Page 11

Unsere Hair Topper lassen Sie ganz individuelle Farbakzente setzen. Gefärbte Spitzen und getönte Strähnen. Harmonische Übergänge, spannende Kontraste und reizvolle Kombinationen mit Eigenhaar. Mit Top Power treffen Sie den richtigen Ton!

Our hair toppers made of real hair let you set individual colour accents. Coloured tips and tinted strands. Harmonious transitions, exciting contrasts and charming combinations of topper and own hair. With Top Power you hit the right tone!



S3

Mixed colours

Hair Topper combined with
your own natural hair.

CUSTOMIZE YOUR Curls

54

colour: champagne

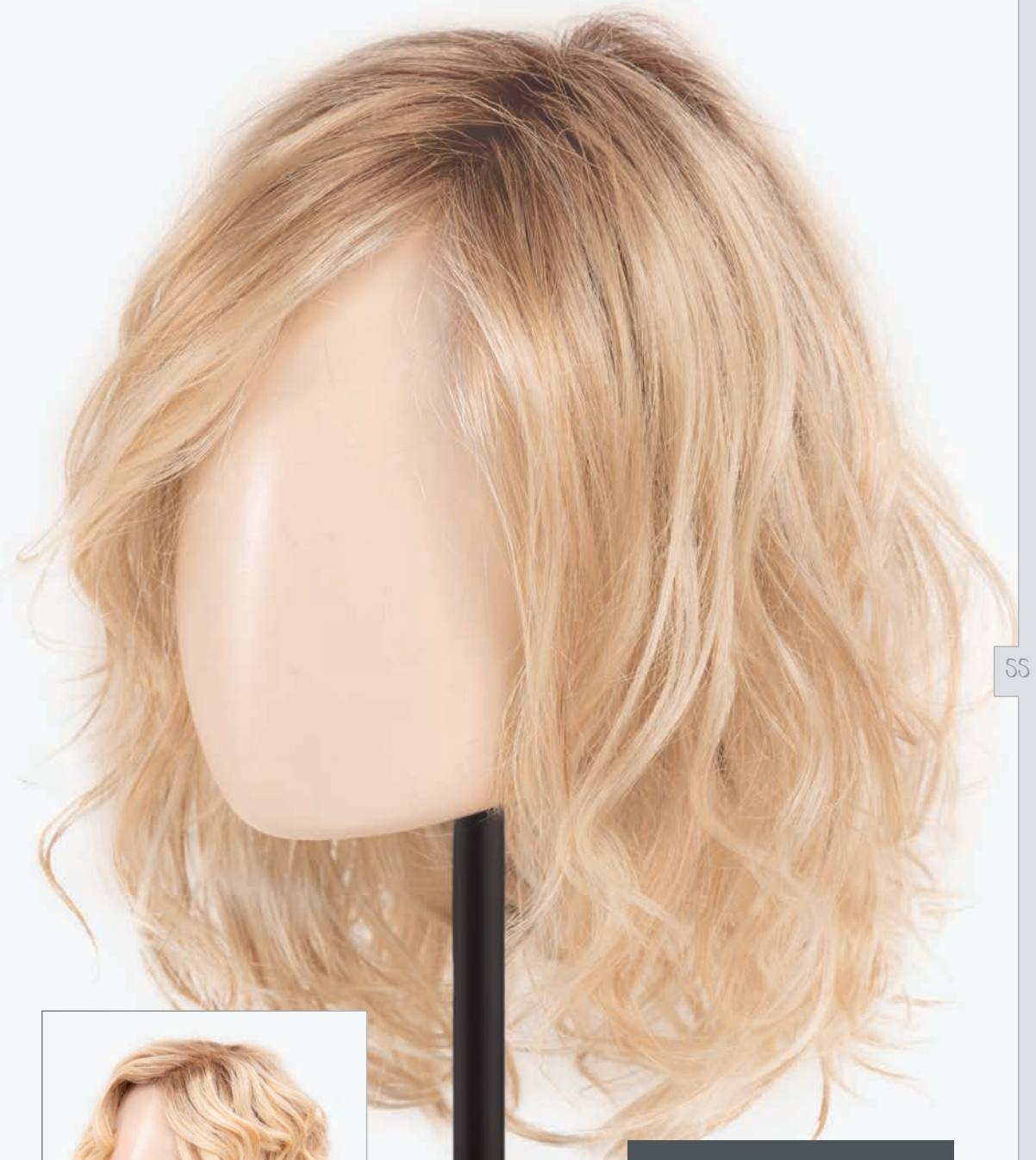


HAIR TOPPER **Matrix**

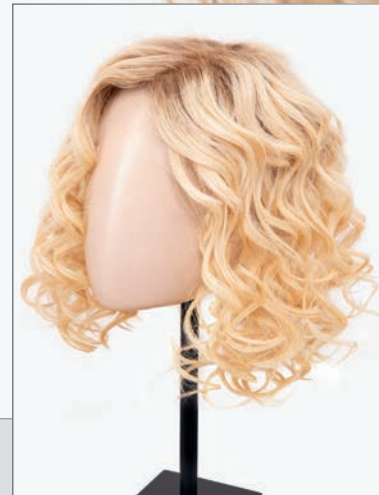
Page 41

Die ellen wille Hair Topper aus Echthaar und Prime Hair können mit Lockenwicklern, Glätteisen und Föhn gestylt werden. Von leichten Waves bis schicken Curls sind dadurch unterschiedliche Strukturen möglich. Erkunden Sie die ganze Vielfalt verlockender Looks!

The ellen wille hair toppers made of human hair and Prime Hair can be styled with curlers, straightening irons and hair-dryers. From light waves to chic curls, different structures are possible. Explore the whole variety of enticing looks!



55



Enjoy curls
Discover various degrees
of curls.

Overview

Top Power
BY ELLEN WILLE

HIGH HEAT FIBER



SYNTHETIC HAIR

SH
SYNTHETIC
HAIR



Close ★★★★★)

chocolate mix • mocca mix • bernstein mix • darksand mix • sand mix • champagne mix • salt/pepper mix • **smoke mix** • pearl mix • snow mix

Size: 29 x 22 cm • Length: 9 - 10 cm

Page 08

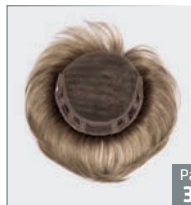


Fizz ★★★★★))

espresso mix • darkchocolate rooted • chocolate mix • mocca rooted • lightbernstein rooted • sand rooted • sandyblonde rooted • pastelblonde rooted • **lightchampagne rooted** • stonegrey rooted • silver mix

Size: 29 x 22 cm • Length: 17 - 25 cm

Page 28



Lace Top ★★★★★)

espresso mix • chocolate mix • nougat rooted • mocca rooted • **bernstein rooted** • caramel rooted • champagne rooted • stonegrey mix • silver mix

Size: 17 x 16 cm • Length: 10 - 12 cm

Page 34

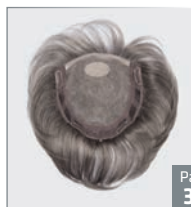


Secret ★★★★★))

espresso mix • darkchocolate rooted • chocolate mix • mocca mix • bernstein rooted • sandyblonde rooted • **champagne rooted** • stonegrey rooted • silvergrey mix

Size: 29 x 23 cm • Length: 28 - 32 cm

Page 42

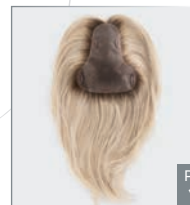


Top Mono ★★★★★

espresso mix • chocolate mix • bernstein mix • sand mix • caramel mix • champagne mix • **smoke mix** • snow mix • silver mix

Size: 17 x 16 cm • Length: 12 - 14 cm

Page 38

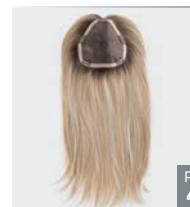


Page 16

Couture ★★★★★)

espresso mix • darkchocolate mix • chocolate rooted • mocca rooted • lightbernstein rooted • sandyblonde rooted • pearlblonde rooted • **lightchampagne rooted** • auburn rooted • salt/pepper mix • silver mix

Size: 14 x 18 cm • Length: 28 - 30 cm

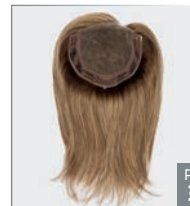


Page 44

Dream ★★★★★

espresso mix • darkchocolate mix • chocolate rooted • mocca rooted • bernstein rooted • sand rooted • **sandyblonde rooted** • lightchampagne rooted • salt/pepper mix • silver mix

Size: 16 x 14 cm • Length: approx. 40 cm

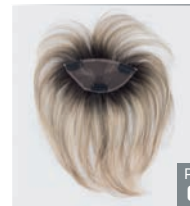


Page 30

Effect ★★★★★)

espresso mix • darkchocolate mix • chocolate mix • mocca rooted • **bernstein rooted** • caramel mix • sandyblonde rooted • pearlblonde rooted • auburn rooted

Size: 18 x 17 cm • Length: 18 - 29 cm

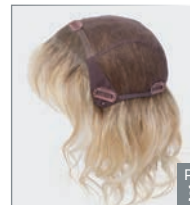


Page 04

Fun ★★★★★

espresso mix • darkchocolate mix • chocolate mix • mocca rooted • lightbernstein rooted • **sandmulti rooted** • sandyblonde rooted • champagne rooted • auburn rooted • pearl rooted • white mix

Size: 13 x 6 cm • Length: 12 - 24 cm

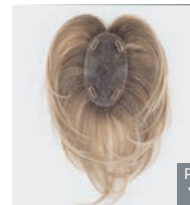


Page 32

Lovely ★★★★★))

espresso mix • darkchocolate mix • chocolate rooted • mocca rooted • lightbernstein rooted • sandmulti rooted • sandyblonde rooted • pearlblonde rooted • **champagne rooted**

Size: 29 x 23 cm • Length: 12 - 23 cm

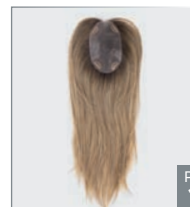


Page 10

Just ★★★★★)

espresso mix • darkchocolate mix • chocolate mix • mocca mix • bernstein rooted • sand mix • **sandyblonde rooted** • pearlblonde mix • champagne mix • silver mix

Size: 8 x 14 cm • Length: 23 - 24 cm



Page 14

Just Long ★★★★★)

espresso mix • darkchocolate mix • chocolate mix • mocca mix • **bernstein rooted** • sand mix • sandyblonde rooted • pearlblonde mix • champagne mix

Size: 8 x 14 cm • Length: 38 - 40 cm

HUMAN HAIR

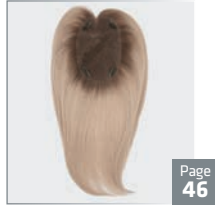


Famous ☆☆☆☆)

espresso mix • darkchocolate mix • chocolate mix • mocca mix • nougat rooted • **lightbernstein rooted** • sandyblonde mix • champagne rooted

Size: 16 x 17 cm • Length: 30 – 32 cm

Page 26



Fill In ☆☆☆☆)

espresso mix • darkchocolate mix • chocolate mix • mocca mix • bernstein mix • sand mix • **sandyblonde rooted** • champagne rooted

Size: 8 x 13 cm • Length: 26 – 28 cm

Page 46



Ideal ☆☆☆☆)

espresso mix • darkchocolate mix • chocolate mix • mocca mix • bernstein mix • sand mix • sandyblonde rooted • **champagne rooted**

Size: 29 x 24 cm • Length: 9 – 14 cm

Page 18



Just Nature ☆☆☆☆)

espresso mix • darkchocolate mix • chocolate mix • mocca mix • bernstein mix • sand mix • **sandyblonde rooted** • champagne rooted

Size: 8 x 13 cm • Length: 26 – 28 cm

Page 12

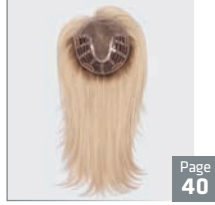


Magic ☆☆☆☆)

espresso mix • darkchocolate mix • chocolate mix • mocca mix • lightbernstein rooted • **sandyblonde rooted** • champagne mix

Size: 14 x 17 cm • Length: 20 – 23 cm

Page 24



Matrix ☆☆☆☆)

espresso mix • darkchocolate mix • chocolate mix • mocca mix • sand mix • sandyblonde rooted • **champagne rooted**

Size: 16 x 17 cm • Length: 32 – 36 cm

Page 40



Value ☆☆☆☆☆)

espresso mix • darkchocolate mix • chocolate mix • mocca mix • lightbernstein rooted • sand mix • **sandyblonde rooted** • champagne rooted

Size: 17 x 17 cm • Length: 12 – 16 cm

Page 06

EUROPEAN HUMAN HAIR



Cometa ☆☆☆☆)

espresso mix • **darkchocolate mix** • chocolate mix • mocca mix • lightbernstein mix • sandyblonde mix • champagne mix

Size: 13 x 16 cm • Length: 16 – 22 cm

Page 48

PRIME HAIR



Real ☆☆☆☆)

espresso mix • darkchocolate mix • chocolate mix • **bernstein rooted** • sand mix • champagne rooted • smoke mix • naturewhite mix

Size: 13 x 16 cm • Length: 14 – 20 cm

Page 22

58

Quality



Monofilament + Tresse
Monofilament + wefted
Monofilament + tresses
Monofilamento + lavorata a macchina
Monofilamento + tejida a máquina
Монофиламент + трессы



Filmansatz
Lace front
Bordure invisible
Tulle Cinema
Tul frontal
Невидимая фронтальная линия



mix
Modische Farbmischung und Strähnung
Fashionable colour blend and high/lowlights
Effet méché dans des coloris tendance
Miscela di tonalità diverse alla moda
Mezcla de colores y mechas de moda
Модный микс цветов и мелирование



100 % handgeknüpft
100 % handmade
100 % fait main
100 % fatta a mano
100 % anudada a mano
100 % ручная работа



Erweiterter Filmansatz
Extended Lace front
Bordure invisible extra-longue
Tulle Cinema prolungato
Tul frontal alargado
Удлиненная фронтальная линия



rooted
Natürliche Ansatzfarbgebung
Naturally rooted colours
Effet racine dans un ton plus foncé
Effetto ricrescita: la base delle meche è scura
Raíz naturalmente más oscura
Эффект отросших корней



Monofilament + 100 % handgeknüpft
Monofilament + 100 % handmade
Monofilament + 100 % fait main
Monofilamento + 100 % fatta a mano
Monofilamento + 100 % anudada a mano
Монофиламент + 100 % ручная работа



HIGH HEAT
FIBER

De High-Heat-Fasern sind modernes, hitzeresistentes Kunsthaar. Ebenso wie Synthetic Hair sind sie pflegeleicht und „ready-to-wear“. Außerdem können sie bei fachgerechter Anwendung mit Frisierutensilien wie Glätteisen, Lockenwicklern oder dem Fön nach eigenen Wünschen permanent umgestylt werden. Unsere High-Heat-Modelle verbinden Qualität mit Flexibilität.

En High Heat fiber is a modern, heat-resistant synthetic hair. Just like synthetic hair, these models are easy to care for and „ready-to-wear“. They can be permanently restyled with styling tools such as straighteners, curlers or a hair dryer according to your own wishes. Our high-heat range combines quality with flexibility.



SYNTHETIC
HAIR

De Kunsthaar ist pflegeleicht und sieht natürlich aus. Es ist in einer großen Auswahl von Farben verfügbar. Neue Looks im Handumdrehen. Unsere Synthetic-Hair-Topper sind unkomplizierte „ready-to-wear“-Lösungen für mehr Volumen.

En Synthetic hair is easy to care for and looks natural. It is available in a wide range of colours. New looks in no time. Our synthetic hair toppers are uncomplicated „ready-to-wear“ solutions for more volume.



PRIME
HAIR

De Prime Hair ist ein innovativer Mix aus High-Heat-Fasern und hochwertigem Echthaar. Es vereint die Vorteile der beiden Haartypen. Der Prime-Hair-Mix ist leicht, flexibel und bleibt durch seinen Memory-Effekt bestens in Form. Unsere Prime-Hair-Faser schafft Inspiration aus Innovation.

En Prime Hair is an innovative mix of high-heat fiber and high-quality human hair. It combines the advantages of both hair types. The Prime Hair mix is light, flexible and keeps its shape perfectly thanks to its memory effect. Our Prime Hair collection creates inspiration from innovation.



HUMAN
HAIR

De Unsere Hair Topper aus Echthaar verfügen über natürlichen Glanz, sind seidenweich und ergänzen eigenes Haar ideal. Sie lassen sich föhnen und mit dem Glätteisen stylen. Für die Top-Power-Modelle verwenden wir hochwertiges Remy Human Hair. Unsere Hair Topper sind wahr gewordene Echthaarträume.

En Our human hair toppers have a natural shine, are silky soft and complement your own hair perfectly. They can be blow-dried and styled with a straightening iron. Our Top Power models are made of high-quality Remy Human Hair. Human hair dreams come true.

Colours



espresso
4.2



darkchocolate
6.33.4



chocolate
830.6



mocca
830.27.12



nougat
12.8.20



bernstein
12.26.19



lightbernstein
12.26.27



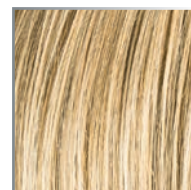
darksand
12.20.22



sand
14.26.20



sandmulti
14.22.12



caramel
20.14.26



sandyblonde
16.22.14



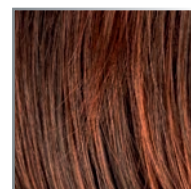
pearlblonde
101.20.25



champagne
22.26.20



pastelblonde
25.23.22



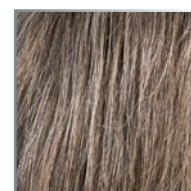
auburn
33.130.4



lightchampagne
23.25.24



salt/pepper
39.51.60



smoke
48.38.36



stonegrey
48.56



pearl
101.14



snow
60.56.58



silvergrey
56.60



silver
60.56



naturewhite
60.101



white
60

Top Power

BY ELLEN WILLE


ellen
wille

THE HAIR YOU LOVE

www.ellen-wille.de